

Tucson

2018



Full of life.



Whether you're running errands around the city or planning a getaway, the 2018 Tucson is ready for adventure. The stylish exterior is complemented by a wealth of technology to keep you connected on your journeys. Enjoy hassle-free connectivity with the standard Bluetooth® hands-free phone system and available Android Auto™[◇] and Apple CarPlay™[△] technology to effortlessly integrate select apps from your phone. The tech-filled interior is also extremely spacious, offering up to 1,754 litres of cargo capacity and an available panoramic sunroof for a wide open view of the sky.

Power your adventures.

Choose between the standard 164 horsepower 2.0L Gasoline Direct Injection (GDI) engine, or an available 1.6L Turbocharged engine with 175 horsepower and 195 lb-ft of torque. Both options can be combined with our available All-Wheel Drive (AWD) system featuring Active Cornering Control. This advanced system continuously monitors driving conditions and anticipates traction requirements, unlike many other systems, which only react to conditions after they have occurred.



Hands-free convenience.

No need to search for your keys, or kick and shuffle your feet to open the rear liftgate. The available proximity key technology allows you to automatically open the Smart Power Liftgate and unload your two hands' worth of cargo effortlessly. Make use of the available 1,754 litres of cargo space with rear seats folded down, or split-fold them 60/40 to accommodate longer items and your passengers.

All-season comfort.

Enjoy winter adventures in comfort thanks to the standard heated front seats, an available heated steering wheel and available heated rear seats for the crew in the back. When the temperature starts to warm up over summer, you and your co-pilot can cool off with available ventilated front seats.



Stay connected.

Available Android Auto™[◇] and Apple CarPlay™[△] smartphone connectivity adds next level convenience by displaying your favourite apps, including navigation and text messages, on the available 7.0" or 8.0" touch-screen. You can also enjoy the convenience of a fully integrated navigation system (with 8.0" touch-screen) so that you can access maps and directions without using data.



1.6T Ultimate model shown



Available Infinity® audio system



Available heated steering wheel



Available panoramic sunroof

State-of-the-art safety.

At the core of the 2018 Tucson is a SUPERSTRUCTURE™, an ultra-rigid vehicle frame made from our very own Advanced High Strength Steel to deliver exceptional stiffness and strength. In the event of a collision, the strong frame helps protect occupants inside the vehicle by absorbing harmful energy and redirecting it away from the passenger compartment.

+an array of advanced safety technologies



Available Blind Spot Detection with Lane Change Assist



Available Rear Cross-Traffic Alert



Available Lane Departure Warning System



Available Autonomous Emergency Braking with Pedestrian Detection



Available Rear Parking Assist Sensors



Standard 5.0" touch-screen display with rearview camera



Standard 7 airbags



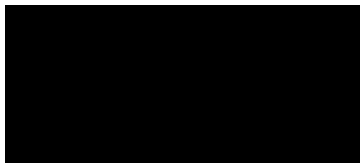
The SUPERSTRUCTURE™

Learn more at hyundaicanada.com/2018Tucson

Colours and wheels

Exterior Colours

Ash Black



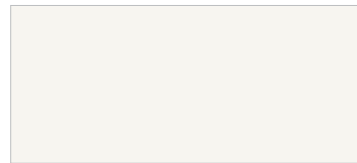
Coliseum Grey



Chromium Silver



Winter White



Ruby Wine



Caribbean Blue*



Sedona Sunset**

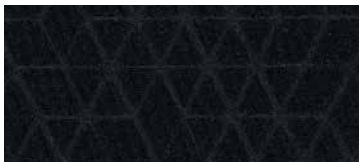


*Not available on 2.0L model

**Available on 1.6T Ultimate model only

Interior Colours

Black Cloth



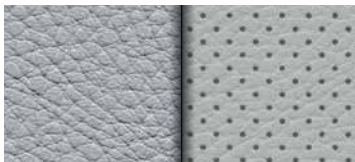
Standard on 2.0L and 2.0L Premium models

Black Leather



Standard on 2.0L SE, 2.0L Luxury, 1.6T SE and 1.6T Ultimate models

Grey Leather



Available on 2.0L Luxury and 1.6T Ultimate models

(Coliseum Grey and Ash Black exterior colours only)

Beige Leather



Available on 2.0L Luxury and 1.6T Ultimate models

(Ruby Wine, Winter White and Ash Black exterior colours only)

Wheels



Standard 17" steel wheels



Available 17" alloy wheels



Available 19" alloy wheels with black accents

Choice of interior colour depends upon model and/or exterior colour selection. Colours shown are for reference only and may vary from the actual hue and appearance. Visit hyundaicanada.com, or see your dealer for details.

Specifications

- Standard
- Not Available
- Optional

	2.0L	2.0L Premium	2.0L SE	2.0L Luxury	1.6T SE	1.6T Ultimate
Performance						
Engine and transmission						
2.0L GDI 4-cylinder engine, 164hp and 151 lb-ft torque	•	•	•	•	–	–
1.6L Turbo-GDI 4-cylinder engine, 175hp and 195 lb-ft torque	–	–	–	–	•	•
6-speed automatic transmission	•	•	•	•	–	–
7-speed EcoShift Dual Clutch Transmission	–	–	–	–	•	•
Drive configuration						
Front-Wheel Drive (FWD)	•	•	•	–	–	–
All-Wheel Drive (AWD) with Active Cornering Control	◦	◦	◦	•	•	•
Exterior						
Wheels and tires						
17" steel wheels	•	–	–	–	–	–
17" alloy wheels	–	•	•	•	–	–
19" alloy wheels with black accents	–	–	–	–	•	•
P225/60R17 all-season tires	•	•	•	•	–	–
P245/45R19 all-season tires	–	–	–	–	•	•
Exterior lighting						
Automatic headlights	•	•	•	•	•	•
Front fog lights	•	•	•	•	•	•
LED Daytime Running Lights	•	•	•	•	•	•
Projection headlights with LED accents	•	•	•	•	•	•
LED headlights	–	–	–	–	–	•
LED tail lights	–	–	–	–	–	•
Outside mirrors						
Power activation, body colour, heated with timer	•	•	•	•	•	•
LED side mirror turn signal repeaters	–	•	•	•	•	•
Mouldings and trim						
Premium side sills	•	•	•	•	•	•
Body colour door handles	•	•	•	•	–	–
Chrome window belt mouldings	–	–	–	•	•	•
Chrome door handles and front grille	–	–	–	–	•	•
Glass						
Tinted rear windows	–	–	•	•	•	•
Solar control tinted glass	–	–	–	•	–	•
Wipers						
Windshield wiper de-icer	•	•	•	•	•	•
Rear windshield, 2-speed with washer	•	•	•	•	•	•
Other						
Panoramic sunroof	–	–	•	•	•	•
Interior						
Seating						
5-passenger capacity	•	•	•	•	•	•
60/40 split fold-down and reclining rear seatback	•	•	•	•	•	•
Dual level cargo floor	•	•	•	•	•	•
Heated front seats (3-steps)	•	•	•	•	•	•
Multi-adjustable bucket seats	•	•	•	•	•	•
6-way adjustable driver's seat	•	•	–	–	–	–
Cloth seats	•	•	–	–	–	–
Heated rear seats (high/low)	–	•	•	•	•	•

Specifications

- Standard
- Not Available
- Optional

	2.0L	2.0L Premium	2.0L SE	2.0L Luxury	1.6T SE	1.6T Ultimate
Interior						
Seating						
8-way power adjustable driver's seat	–	–	•	•	•	•
Driver's seat power lumbar support (2-way)	–	–	•	•	•	•
Leather seating surfaces	–	–	•	•	•	•
Power passenger seat	–	–	–	–	–	•
Ventilated front seats	–	–	–	–	–	•
Multimedia						
Bluetooth® hands-free phone system	•	•	•	•	•	•
iPod® / USB and MP3 auxiliary input jacks (centre console mounted)	•	•	•	•	•	•
Rearview camera	•	•	•	•	•	•
AM/FM/CD/MP3 audio system with 5.0" touch-screen display and 6 speakers	•	–	–	–	–	–
AM/FM/SiriusXM™/MP3 audio system with 7.0" touch-screen display	–	•	•	–	•	–
Android Auto™ and Apple CarPlay™	–	•	•	•	•	•
8.0" touch-screen navigation system with Map Care	–	–	–	•	–	•
AM/FM/SiriusXM™/MP3 Infinity® audio system with 8 speakers	–	–	–	•	–	•
Shark-fin antenna	–	–	–	•	–	•
Interior trim						
Sunvisor with illuminated vanity mirrors	–	•	•	•	•	•
HVAC						
Rear window defroster with timer	•	•	•	•	•	•
Manual climate control	•	•	–	–	–	–
Floor console mounted rear seat vents	–	•	•	•	•	•
Dual-zone automatic climate control with Clean Air Ionizer with auto-defogging system	–	–	•	•	•	•
Steering wheel						
Audio (volume, mode, seek), cruise and Bluetooth® hands-free telephone controls	•	•	•	•	•	•
Manual tilt and telescopic	•	•	•	•	•	•
Heated, leather-wrapped steering wheel	–	•	•	•	•	•
Convenience						
12-volt outlet centre with hinged cap (2 front, 1 rear)	•	•	•	•	•	•
Cruise control	•	•	•	•	•	•
Power door locks	•	•	•	•	•	•
Remote keyless entry with alarm	•	•	•	•	•	•
Power windows with driver's auto up/down and pinch protection	–	•	•	•	•	•
BlueLink®	–	–	–	•	–	•
Electrochromic auto-dimming rearview mirror with integrated HomeLink® transceiver and compass	–	–	–	•	–	•
Proximity keyless entry with push-button ignition	–	–	–	•	–	•
Smart Power Liftgate	–	–	–	•	–	•
Volume (Litres)						
Total interior volume					3,771	
Passenger interior volume					2,894	
Cargo capacity, rear seats up					877	
Cargo capacity, rear seats down					1,754	
Safety						
Anti-lock Braking System with Electronic Brake-force Distribution and Brake Assist	•	•	•	•	•	•
Anti-theft engine immobilizer	•	•	•	•	•	•
Electronic Stability Control with Traction Control System	•	•	•	•	•	•
Vehicle Stability Management	•	•	•	•	•	•
Blind Spot Detection with Lane Change Assist	–	•	•	•	•	•

Specifications

- Standard
- Not Available
- Optional

2.0L	2.0L Premium	2.0L SE	2.0L Luxury	1.6T SE	1.6T Ultimate
------	--------------	---------	-------------	---------	---------------

Safety					
Rear Cross-Traffic Alert	-	●	●	●	●
Rear Parking Assistance Sensors	-	-	-	●	●
Autonomous Emergency Braking	-	-	-	-	●
Lane Departure Warning System	-	-	-	-	●

Fuel Economy					
(Litres/100km)^					
2.0 FWD City / Hwy / Combined					10.1 / 7.8 / 9.0
2.0 AWD City / Hwy / Combined					11.0 / 9.1 / 10.2
1.6T AWD City / Hwy / Combined					9.9 / 8.5 / 9.3



BlueLink[®] at your service.

Hyundai is proud to introduce BlueLink[®] to enhance your safety, service and entertainment experience. BlueLink[®] brings seamless connectivity directly into your car and can be easily accessed with a web connection, smartphone app or by using the control interface on your rearview mirror. Features include:

- ✓ **Complimentary 5-Year subscription with select models**
- ✓ **Remote Start with climate control**
- ✓ **Remote Lock/Unlock**
- ✓ **Find My Car**
- ✓ **SOS Emergency and Roadside Assistance**
- ✓ **Automatic Collision Notification**
- ✓ **Local Search powered by Google[™]**



Our SUV family.

The choice is all yours. The Tucson, Santa Fe Sport, and Santa Fe XL all offer unique attributes and impressive capabilities that more than measure up to the most stringent of demands. Whether you need seating for up to seven or versatile storage space, each is designed to help make your daily commute enjoyable and safe — and to inspire adventure with our available advanced All-Wheel Drive (AWD) system.



Dimensions

Overall width
(excluding mirrors)



1,850 mm

Overall length



4,475 mm

Overall height



1,650 mm

Accessories



Running boards

Getting in and out of your vehicle is easier with a set of durable running boards.



Trailer hitch kit

Designed to meet your towing needs, a Hyundai hitch can accommodate a wide variety of hitch-mounted accessories. Kit includes the trailer hitch, ball mount and end cap. Chrome ball shown not included.



Premium all-weather floor liners

Premium all-weather floor liners were designed to cover the interior carpet, providing maximum protection against the elements that other mats cannot offer. Their unique and durable design features a non-slip surface for added comfort and a long lasting premium look. Remove carpet mats prior to installation.



Cross rails

This durable, quick-locking cross rail system lets you transport cargo easily, without sacrificing interior room.

5 YEAR/100,000 KM
Comprehensive Limited Warranty[†]
YEAR/100,000 KM
Powertrain Warranty
YEAR/100,000 KM
Emission Warranty
YEAR/UNLIMITED KM
Roadside Assistance Program^{††}

One of the best-backed warranties in Canada.

You will see that a number of our vehicles have received multiple awards from the most reputable third-party organizations, so you can take their word when it comes to the quality, design and safety of our vehicles. This quality is equally matched by the quality of our warranty. We stand confidently behind our products to give you ultimate peace of mind with a 5-year/100,000 kilometre Comprehensive Limited Warranty[†]. We also provide a 5-year/Unlimited kilometre Roadside Assistance Program^{††} featuring flat tire changing, lockout service and more. Just one toll-free call away, 24 hours a day.

^{™/®}The Hyundai name, logos, product names, feature names, images and slogans are trademarks owned or licensed by Hyundai Auto Canada Corp.. Specifications, features, illustrations, accessories, materials and equipment and all other information shown in this brochure are based on the latest information available at the time of publication. Although descriptions are believed to be correct, accuracy cannot be guaranteed. Hyundai Auto Canada Corp. reserves the right to make any changes or modifications at any time, without notice or obligation, including, without limitation, in colour, specifications, features, accessories, materials, equipment and models. Some vehicles are shown with optional equipment. All Hyundai warranties have no deductible. [†]Fuel economy figures are based on manufacturer's testing and are used for comparison purposes only. Actual fuel efficiency may vary based on driving conditions and the addition of certain vehicle accessories. [‡]Android Auto[™] is compatible with Android phones running Android Lollipop or newer. Android Auto may not be available on all devices and is not available in all countries or regions. Additional apps may be required. Visit www.android.com for further details and any applicable limitations. Subject to app compatibility. Android and Android Auto are trademarks of Google Inc.. [§]Apple CarPlay[™] works with iPhone 5s, iPhone 5c, iPhone 5 and later models running the latest version of iOS 7 and above. CarPlay[™] may not be available on all devices and may not be available in all countries or regions. Visit www.apple.com for further details and any applicable limitations. Subject to app compatibility. Apple, Apple CarPlay and iPod are trademarks of Apple Inc.. [¶]Available on select models only. BlueLink[®] includes 5 years of service without charge. The BlueLink[®] service is available for new vehicle purchases and leases subject to the BlueLink[®] subscription terms and conditions. Only use BlueLink[®] and corresponding devices when safe to do so. Cellular and GPS coverage is required. Features, specifications, and fees may vary by model and are subject to change. For more on details and limitations, visit hyundaicanada.com or your authorized Hyundai dealer. The SiriusXM[™] name is a trademark of SiriusXM Satellite Radio Inc.. Bluetooth[®] word mark and logos are registered trademarks owned by Bluetooth SIG, Inc.. HomeLink[®] is a registered trademark of Johnson Controls Inc.. Infinity[®] is a registered trademark of Harman International, Inc.. All other trademarks and trade names are those of their respective owners.

Hyundai Auto Canada Corp.
hyundaicanada.com

