

**Dimensions / 8-2**

**Bulb wattage / 8-2**

**Tires and wheels / 8-3**

**Recommended lubricants and capacities / 8-4**

**Vehicle identification number (VIN) / 8-7**

**Vehicle certification label / 8-7**

**Tire specification and pressure label / 8-8**

**Engine number / 8-8**

**Specifications & Consumer information**

**8**

## Specifications & Consumer information

### DIMENSIONS

I010000ACM

Item	mm (in)
Overall length	4650 (183.1)
Overall width	1890 (74.4)
Overall height	1725 (67.9)/1760 (69.3)*
Front tread	1615 (63.6)
Rear tread	1620 (63.8)
Wheelbase	2700 (106.3)

\* with roof rack

### BULB WATTAGE





I030000ACM

Light Bulb		Wattage
Headlights (Low)		55
Headlights (High)		55
Front turn signal lights / Position lights (Front side markers)		27/8
Front fog lights*		27
Stop and tail lights		27/8
Tail lights		8
Rear turn signal lights		27
Back-up lights		16
Rear side markers		5
High mounted stop light*	With spoiler	LED
	Without spoiler	5
License plate lights		5
Map lamp		10
Room lamp		10
Luggage lamp		10
Glove box lamp		5
Vanity mirror lamp*		5
Door courtesy lamp		5

\* If equipped

## TIRES AND WHEELS

I020000ACM


Item	Tire size	Wheel size	Inflation pressure kPa (psi)				Wheel lug nut torque kg•m (lb•ft, N•m)
			Normal load (  +  )		Maximum load (  +  )		
			Front	Rear	Front	Rear	
Full size tire	P235/65R17	7.0J×17	230	230	260	290	9~11 (65~79, 88~107)
	P235/60R18	7.0J×18	(33)	(33)	(38)	(42)	
Compact spare tire (if equipped)	T165/90R17	4.0T×17	420 (60)	420 (60)	420 (60)	420 (60)	

### RECOMMENDED LUBRICANTS AND CAPACITIES

I040000ACM-EC

To help achieve proper engine and powertrain performance and durability, use only lubricants of the proper quality. The correct lubricants also help promote engine efficiency that results in improved fuel economy.

These lubricants and fluids are recommended for use in your vehicle.

Lubricant		Volume	Classification	
Engine oil <sup>1 2</sup> (drain and refill) Recommends 	2.4 Engine	4.6 l (4.86 US qt.)	API Service SM <sup>3</sup> , ILSAC GF-4 or above	
	3.5 Engine	5.2 l (5.49 US qt.)		
Manual transaxle fluid	2.4 Engine	1.8 l (1.90 US qt.)	API GL-4, SAE 75W/85 (HYUNDAI genuine transaxle fluid)	
Automatic transaxle fluid	2.4 Engine	7.1 l (7.50 US qt.)	MICHANG ATF SP-IV, SK ATF SP-IV, NOCA ATF SP-IV, HYUNDAI genuine ATF SP-IV	
	3.5 Engine	7.8 l (8.24 US qt.)		
Power steering		1.0 l (1.06 US qt.)	PSF-3	
Coolant	2.4 Engine	MT	6.5 l (6.87 US qt.)	Mixture of antifreeze and distilled water (Ethylene glycol base coolant for aluminum radiator)
		AT	6.6 l (6.97 US qt.)	
	3.5 Engine	AT	8.6 l (9.09 US qt.)	

Lubricant		Volume	Classification
Brake/clutch fluid		0.7~0.8 l (0.74~0.85 US qt.)	FMVSS116 DOT-3 or DOT-4
Rear differential oil (AWD)		0.7 l (0.74 US qt.)	HYPLOYD GEAR OIL API GL-5, SAE 75W/90 (SHELL SPIRAX X or equivalent)
Transfer case oil (AWD)	2.4 Engine	0.6 l (0.63 US qt.)	HYPLOYD GEAR OIL API GL-5, SAE 75W/90 (SHELL SPIRAX X or equivalent)
	3.5 Engine	0.7 l (0.74 US qt.)	
Fuel		68 l (17.96 US gal.)	Refer to "Fuel requirements" in section 1

\*1 Refer to the recommended SAE viscosity numbers on the next page.

\*2 Engine oils labeled Energy Conserving Oil are now available. Along with other additional benefits, they contribute to fuel economy by reducing the amount of fuel necessary to overcome engine friction. Often, these improvements are difficult to measure in everyday driving, but in a year's time, they can offer significant cost and energy savings.

\*3 If the API service SM engine oil is not available in your country, you are able to use API service SL.

MT : Manual transaxle

AT : Automatic transaxle

I040100AXM

## Recommended SAE viscosity number

### CAUTION

*Always be sure to clean the area around any filler plug, drain plug, or dipstick before checking or draining any lubricant. This is especially important in dusty or sandy areas and when the vehicle is used on unpaved roads. Cleaning the plug and dipstick areas will prevent dirt and grit from entering the engine and other mechanisms that could be damaged.*

Engine oil viscosity (thickness) has an effect on fuel economy and cold weather operating (engine start and engine oil flowability). Lower viscosity engine oils can provide better fuel economy and cold weather performance, however, higher viscosity engine oils are required for satisfactory lubrication in hot weather. Using oils of any viscosity other than those recommended could result in engine damage.

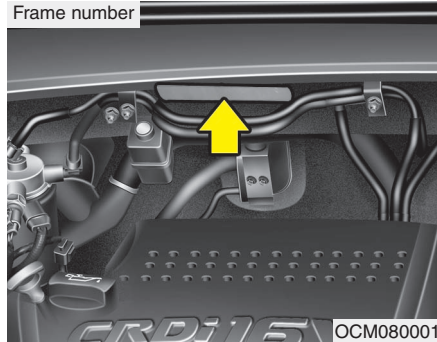
When choosing an oil, consider the range of temperature your vehicle will be operated in before the next oil change. Proceed to select the recommended oil viscosity from the chart.

Temperature Range for SAE Viscosity Numbers											
Temperature	°C	-30	-20	-10	0	10	20	30	40	50	
	(°F)	-10	0	20	40	60	80	100	120		
Gasoline Engine Oil *1							10W-30				
							5W-20, 5W-30				

\*1 : For better fuel economy, it is recommended to use the engine oil of a viscosity grade SAE 5W-20 (API SM / ILSAC GF-4). However, if the engine oil is not available in your country, select the proper engine oil using the engine oil viscosity chart.



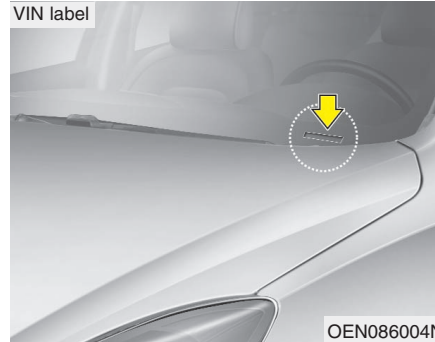
## VEHICLE IDENTIFICATION NUMBER (VIN)



H010000AEN

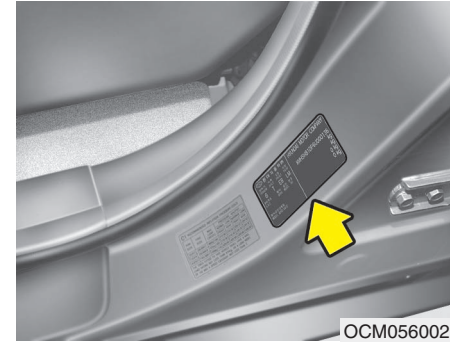
The vehicle identification number (VIN) is the number used in registering your vehicle and in all legal matters pertaining to its ownership, etc.

The number is punched on the engine compartment bulkhead.



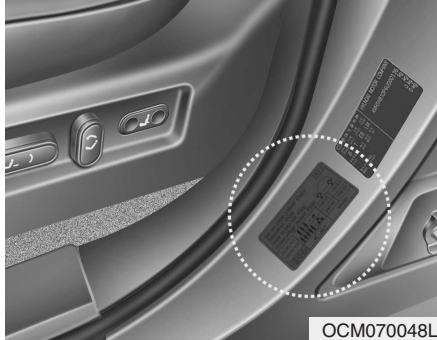
The VIN is also on a plate attached to the top of the dashboard. The number on the plate can easily be seen through the windshield from outside.

## VEHICLE CERTIFICATION LABEL



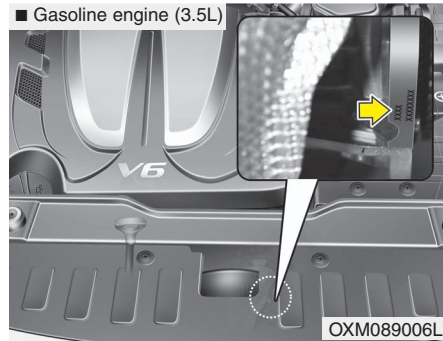
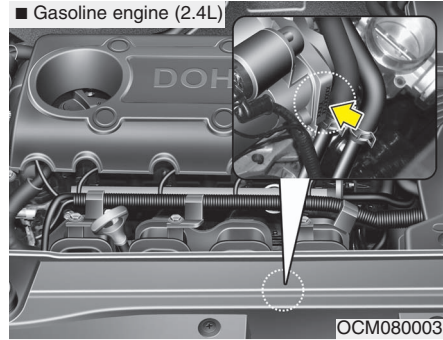
The vehicle certification label attached on the driver's side center pillar gives the vehicle identification number (VIN).

## TIRE SPECIFICATION AND PRESSURE LABEL



The tires supplied on your new vehicle are chosen to provide the best performance for normal driving. The tire label located on the driver's side center pillar gives the tire pressures recommended for your vehicle.

## ENGINE NUMBER



The engine number is stamped on the engine block as shown in the drawing.