

## Specifications & Consumer information

Dimensions .....	8-2
Engine .....	8-2
Bulb wattage .....	8-3
Tires and wheels .....	8-5
Air conditioning system .....	8-6
Luggage volume .....	8-6
Gross vehicle weight .....	8-6
Recommended lubricants and capacities .....	8-7
• Recommended SAE viscosity number .....	8-8
Vehicle certification label .....	8-9
Vehicle identification number (VIN) .....	8-9
Engine number .....	8-10
Tire specification and pressure label .....	8-10
Refrigerant label .....	8-10

## DIMENSIONS

Item	mm (in)	
Overall length	4,905 (193.11)	
Overall width	1,885 (74.21)	
Overall height	1,690 (66.54), 1,700 (66.93) * <sup>1</sup>	
Front tread	235/60R18	1,628 (64.09)
	235/55R19	1,628 (64.09)
	P235/55R19	1,628 (64.09)
Rear tread	235/60R18	1,639 (64.53)
	235/55R19	1,639 (64.53)
	P235/55R19	1,639 (64.53)
Wheelbase	2,800 (110.24)	

\*<sup>1</sup> with roof rack

## ENGINE

Item	Lambda 3.3
Displacement cc (cu. in)	3,342 (203.9)
Bore x Stroke mm (in.)	92x83.8 (3.6x3.3)
Firing order	1-2-3-4-5-6
No. of cylinders	6

**BULB WATTAGE**

Lamp Bulb		Wattage	Bulb type	
Front	Headlamp (Low)	Halogen	55W	H7LL
		HID	35W	D1S
	Headlamp (High)	Halogen	55W	H7LL
	Position lamp		LED	LED
	Fog lamp*		LED	LED
	Turn signal lamp	Halogen	21W	PY21W
		HID	28/8W	PY28/8W
	Turn signal lamp (outside mirror)*		LED	LED
	Front marker lamp		5W	W5W
Daytime running lamp (DRL)		LED	LED	
Rear	Stop/Tail lamp	Bulb	28/8W	P28/8W
		LED	LED	LED
	Tail lamp (Bulb)		28/8W	P28/8W
	Back up lamp		16W	W16W
	Turn signal lamp		27/7W	P27/7W
	Rear marker lamp		5W	W5W
	Licence plate lamp		5W	W5W
	High mounted stop lamp*		LED	LED

(Continued)

## Specifications & Consumer information

---




(Continued)

	<b>Lamp Bulb</b>	<b>Wattage</b>	<b>Bulb type</b>
Interior	Map lamp	10W	FESTOON
	Room lamp	8W	FESTOON
	Vanity mirror lamp	5W	FESTOON
	Glove box lamp	5W	FESTOON
	Luggage lamp	5W	FESTOON

\* If equipped

\* HID : High Intensity Discharge

## TIRES AND WHEELS

Item	Tire size	Wheel size	Inflation pressure [kPa (psi)]				Wheel lug nut torque kgf·m (lbf·ft, N·m)
			Normal load (  + $\emptyset$ )		Maximum load (  +  )		
			Front	Rear	Front	Rear	
Full size tire	235/60R18	7.5J×18	230 (33)	230 (33)	230 (33)	230 (33)	9~11 (65~79, 88~107)
	235/55R19	7.5J×19					
	P235/55R19	7.5J×19					
Compact spare tire	T165/90R17	4.0T×17	420 (60)	420 (60)	420 (60)	420 (60)	

### \* NOTICE

- It is permissible to add 20 kPa (3 psi) to the standard tire pressure specification if colder temperatures are expected soon. Tires typically lose 7 kPa (1 psi) for every 7°C (12°F) temperature drop. If extreme temperature variations are expected, recheck your tire pressure as necessary to keep them properly inflated.
- An air pressure generally decreases, as you drive up to a high-altitude area above sea level. Thus, if you plan to drive a high-altitude area, check the tire pressures in advance. If necessary, inflate them to a proper level (Air inflation per altitude: +10 kPa/1 km (+2.4 psi/1 mile)).

### CAUTION

*When replacing tires, use the same size originally supplied with the vehicle.  
Using tires of a different size can damage the related parts or make it work irregularly.*

## AIR CONDITIONING SYSTEM

Item		Weight of volume	Classification
Refrigerant	FRONT A/CON	600 ± 25g	R-134a
	FRONT + REAR A/CON	800 ± 25g	
Compressor lubricant	FRONT A/CON	120 ± 10g	PAG (FD46XG)
	FRONT + REAR A/CON	210 ± 10g	

Contact an authorized HYUNDAI dealer for more details.

## GROSS VEHICLE WEIGHT

Item	Lambda 3.3	
	2WD	AWD
Automatic transaxle	2,500 kg (5,512 lbs)	2,550 kg (5,622 lbs)


## LUGGAGE VOLUME

Item		6 Seater	7 Seater
SAE	1 Seat	2,265 l (79 cu ft)	
	2 Seat	1,159 l (40.9 cu ft)	
	3 Seat	383 l (13.5 cu ft)	

## RECOMMENDED LUBRICANTS AND CAPACITIES

To help achieve proper engine and powertrain performance and durability, use only lubricants of the proper quality. The correct lubricants also help promote engine efficiency that results in improved fuel economy.

These lubricants and fluids are recommended for use in your vehicle.

Lubricant			Volume	Classification
Engine oil * <sup>1</sup> * <sup>2</sup> (drain and refill) Recommends 	Gasoline Engine	Lambda 3.3	5.7 l (6.02 US qt.)	API Service SM * <sup>3</sup> , ILSAC GF-4 (or above), ACEA A5 (or above)
Automatic transaxle fluid	Gasoline Engine	Lambda 3.3	7.8 l (8.24 US qt.)	MICHANG ATF SP-IV, SK ATF SP-IV, NOCA ATF SP-IV, HYUNDAI genuine ATF SP-IV
Coolant	Gasoline Engine	Lambda 3.3	9.1 l (9.6 US qt.)	Mixture of antifreeze and distilled water (Ethylene glycol base coolant for aluminum radiator)
Brake fluid			0.7 ~ 0.8 l (0.74 ~ 0.85 US qt.)	FMVSS116 DOT-3 or DOT-4
Rear differential oil (AWD)			0.53 l (0.56 US qt.)	HYPOID GEAR OIL API GL-5, SAE 75W/90 (SHELL SPIRAX X or equivalent)
Transfer case oil (AWD)		Lambda 3.3	0.68 l (0.72 US qt.)	HYPOID GEAR OIL API GL-5, SAE 75W/90 (SHELL SPIRAX X or equivalent)
Fuel			71 l (18.95 US gal.)	Refer to "Fuel requirements" in chapter 1

\*<sup>1</sup> Refer to the recommended SAE viscosity numbers on the next page.

\*<sup>2</sup> Engine oils labeled Energy Conserving Oil are now available. Along with other additional benefits, they contribute to fuel economy by reducing the amount of fuel necessary to overcome engine friction. Often, these improvements are difficult to measure in everyday driving, but in a year's time, they can offer significant cost and energy savings.

\*<sup>3</sup> If the API service SM engine oil is not available in your country, you are able to use API service SL.

### Recommended SAE viscosity number

**⚠ CAUTION**

*Always be sure to clean the area around any filler plug, drain plug, or dipstick before checking or draining any lubricant. This is especially important in dusty or sandy areas and when the vehicle is used on unpaved roads. Cleaning the plug and dipstick areas will prevent dirt and grit from entering the engine and other mechanisms that could be damaged.*

Engine oil viscosity (thickness) has an effect on fuel economy and cold weather operating (engine start and engine oil flowability). Lower viscosity engine oils can provide better fuel economy and cold weather performance, however, higher viscosity engine oils are required for satisfactory lubrication in hot weather. Using oils of any viscosity other than those recommended could result in engine damage.

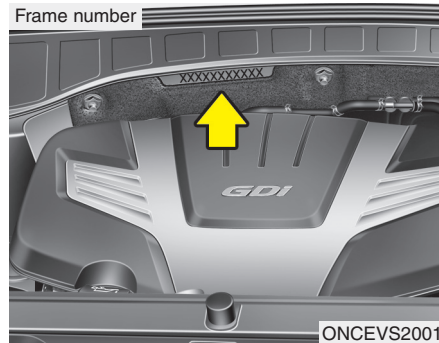
When choosing an oil, consider the range of temperature your vehicle will be operated in before the next oil change. Proceed to select the recommended oil viscosity from the chart.

Temperature Range for SAE Viscosity Numbers										
Temperature	°C	-30	-20	-10	0	10	20	30	40	50
	(°F)	-10	0	20	40	60	80	100	120	
Gasoline Engine Oil *1		<b>10W-30</b>								
		<b>5W-30, 5W-40</b>								

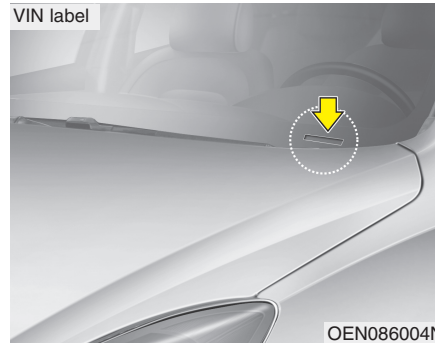
- For better fuel economy, it is recommended to use the engine oil of a viscosity grade SAE 5W-30 (API SM/ILSAC GF-4). However, if the engine oil is not available in your country, select the proper engine oil using the engine oil viscosity chart.



## VEHICLE IDENTIFICATION NUMBER (VIN)

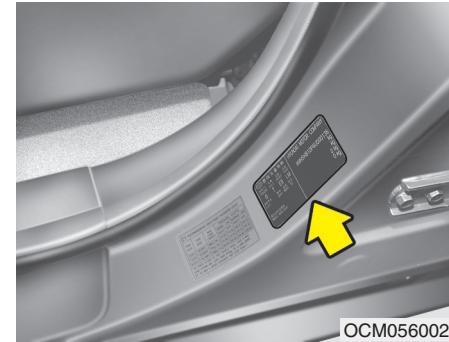


The vehicle identification number (VIN) is the number used in registering your vehicle and in all legal matters pertaining to its ownership, etc. The number is punched on the engine compartment bulkhead.



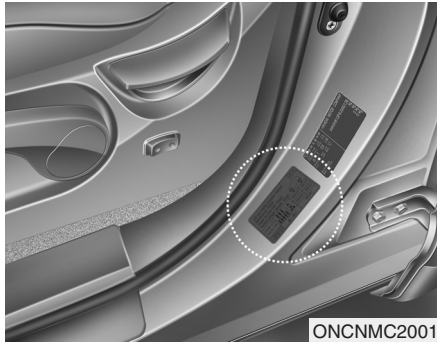
The VIN is also on a plate attached to the top of the dashboard. The number on the plate can easily be seen through the windshield from outside.

## VEHICLE CERTIFICATION LABEL



The vehicle certification label attached on the driver's side center pillar gives the vehicle identification number (VIN).

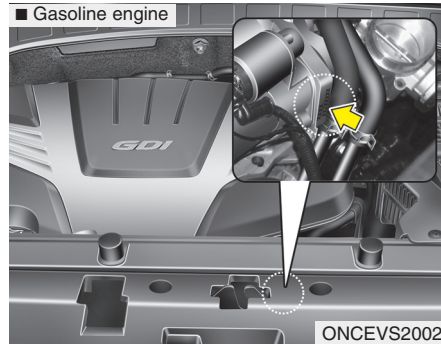
## TIRE SPECIFICATION AND PRESSURE LABEL



The tires supplied on your new vehicle are chosen to provide the best performance for normal driving.

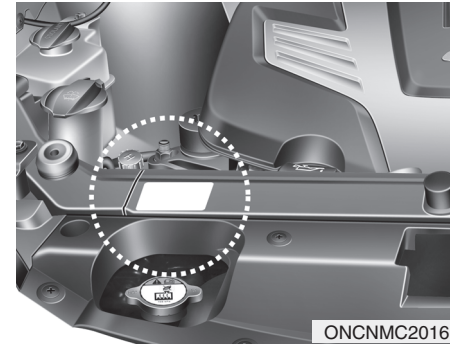
The tire label located on the driver's side center pillar gives the tire pressures recommended for your vehicle.

## ENGINE NUMBER



The engine number is stamped on the engine block as shown in the drawing.

## REFRIGERANT LABEL



The refrigerant label is located at the front of the engine room.