

Specifications & Consumer information

Engine	8-2
Dimensions	8-2
Gross vehicle weight	8-3
Luggage volume	8-3
Bulb Wattage	8-4
Tires and Wheels	8-6
Air Conditioning System.....	8-7
Recommended Lubricants and Capacities	8-8
Recommended SAE Viscosity Number	8-10
Vehicle Identification Number (VIN)	8-11
Vehicle Certification Label	8-11
Tire Specification and Pressure Label	8-12
Engine Number	8-12

DIMENSIONS

Items		mm (in)
Overall length		4,475 (176.18)
Overall width		1,850 (72.83)
Overall height		1,645 (64.76) / 1,650 (66.34) * ¹
Front tread	225/60 R17	1,608 (63.31)
	245/45 R19	1,604 (63.15)
Rear tread	225/60 R17	1,620 (63.78)
	245/45 R19	1,615 (63.58)
Wheelbase		2,670 (105.12)

*¹ : with roof rack

ENGINE

Items	Gamma 1.6 T-GDI	Nu 2.0 GDI
Displacement cc (cu. in)	1,591 (97.09)	1,999 (121.99)
Bore x Stroke mm (in.)	77X85.4 (3.03X3.36)	81X97 (3.19X3.81)
Firing order	1-3-4-2	1-3-4-2
No. of cylinders	4, In-line	4, In-line

GROSS VEHICLE WEIGHT

kg (lbs)

Item	Gamma 1.6 T-GDI		Nu 2.0 GDI	
	2WD	AWD	2WD	AWD
	Dual clutch transmission (DCT)		Automatic transmission (A/T)	
5-passenger	2,110 (4,652)	2,170 (4,784)	2,080 (4,586)	2,150 (4,740)

LUGGAGE VOLUME

Item		5-passenger	
		When the rear cargo adjustable shelf is installed in the upper position:	When the rear cargo adjustable shelf is installed in the lower position:
SAE*	Front row	1,614 l (57 cu ft)	1,754 l (61.94 cu ft)
	Second row	796 l (28.11 cu ft)	877 l (30.97 cu ft)

* : Society of Automotive Engineers

BULB WATTAGE

Light Bulb			Bulb type	Wattage	
Front	Headlamp	Low	Type A, B	H7L	55
			Type C	D3S	35
			Type D	LED	LED
		High	H7L	55	
	Turn signal lamp			PY28/8W	28
	Parking lamp	Type A		PY28/8W	28
		Type B, C, D		LED	LED
	Static bending lamp (SBL)*			LED	LED
	Side marker lamp	Type A, B		W5W	5
		Type C, D		LED	LED
	Fog lamp*			H8L	35
Daytime running lamp (DRL)*			LED	LED	
Side Repeater lamp (Outside mirror)	Type A		WY5W	5	
	Type B		LED	LED	
Rear	Rear combination lamp	Type A	Stop/Tail	P28/8W	28/8
			Tail	P21/5W	10
			Turn signal	PY27W	27
			Back up	W16W	16
		Side marker	W5W	5	
		Type B	Stop/Tail	LED	LED
			Turn signal	PY27W	27
			Back up	W16W	16
	Side marker		LED	LED	
	High mounted stop lamp			LED	LED
License plate lamp			W5W	5	

* If equipped

(Continued)

(Continued)

Light Bulb		Bulb type	Wattage
Interior	Map lamp	with sunroof*	LED
		without sunroof	WEDGE 10
	Room lamp	with sunroof*	LED
		without sunroof	FESTOON 10
	Vanity mirror lamp	FESTOON	5
	Tailgate room lamp	FESTOON	10
Glove box lamp	W5W	5	
ETC	Puddle lamp	LED	LED

* If equipped

TIRES AND WHEELS

Items	Tire Size	Wheel Size	Inflation pressure kPa (psi)				Wheel lug nut torque kgf·m (lbf·ft, N·m)
			Normal Load		Maximum Load		
			Front	Rear	Front	Rear	
Full size tire	225/60 R17	7.0J X 17	240 (35)	240 (35)	240 (35)	240 (35)	9~11 (65~79, 88~107)
	245/45 R19	7.5J X 19					
Compact spare tire	T155/90 D16	4.0T X 16	420 (60)	420 (60)	420 (60)	420 (60)	

NOTICE

- It is permissible to add 20 kPa (3 psi) to the standard tire pressure specification if colder temperatures are expected soon. Tires typically lose 7 kPa (1 psi) for every 7°C (12°F) temperature drop. If extreme temperature variations are expected, recheck your tire pressure as necessary to keep them properly inflated.
- An air pressure generally decreases, as you drive up to a high-altitude area above sea level. Thus, if you plan to drive a high-altitude area, check the tire pressures in advance. If necessary, inflate them to a proper level (Air inflation per altitude: +10 kPa/1 km (+2.4 psi/1 mile)).

CAUTION

When replacing tires, use the same size originally supplied with the vehicle.
Using tires of a different size can damage the related parts or not work properly.


AIR CONDITIONING SYSTEM

Items	Weight of Volume	Classification
Refrigerant g (oz.)	550±25 (19.4±0.88)	R-134a
Compressor lubricant cc (oz.)	120±10 (4.23±0.35)	PAG 30

Contact an authorized HYUNDAI dealer for more details.

RECOMMENDED LUBRICANTS AND CAPACITIES

To help achieve proper engine and powertrain performance and durability, use only lubricants of the proper quality. The correct lubricants also help promote engine efficiency that results in improved fuel economy.

Lubricant		Volume	Classification
Engine oil *1 *2 (drain and refill) Recommends 	Gamma 1.6	4.5 l (4.76 US qt)	ACEA A5*3 (or above)
	Nu 2.0	4.0 l (4.23 US qt.)	API SM*4 & ILSAC GF-4 (or above) ACEA A5*3 (or above)
Automatic transmission fluid		7.3 l (7.71 US qt.)	MICHANG ATF SP-IV, SK ATF SP-IV, NOCA ATF SP-IV, HYUNDAI genuine ATF SP-IV
Ecoshift dual clutch transmission fluid		1.9~2.0 l (2.01~2.11 US qt.)	HK MTF 70W (SK) SPIRAX S6 GHME 70W (H.K.SHELL) GS MTF HD 70W (GS CALTEX) (API GL-4, SAE 70W)
Coolant	Gamma 1.6	7.1 l (7.5 US qt.)	Mixture of antifreeze and water (Phosphate-based Ethylene glycol coolant for aluminum radiator)
	Nu 2.0	7.5 l (7.93 US qt.)	
Brake fluid		0.7~0.8 l (0.74~0.85 US qt.)	FMVSS116 DOT-3 or DOT-4

Lubricant		Volume	Classification
Rear differential oil (AWD)		0.53~0.63 l (0.56~0.67 US qt.)	HYPOID GEAR OIL API GL-5, SAE 75W/90 (SHELL HD AXLE OIL 75W90 or equivalent)
Transfer case oil (AWD)	Gamma 1.6	0.48~0.52 l (0.51~0.55 US qt.)	
	Nu 2.0	0.34~0.36 l (0.36~0.38 US qt.)	
Fuel		62 l (65.51 US qt.)	Refer to "Fuel requirements" in foreword section

*1 : Refer to the recommended SAE viscosity numbers on the next page.

*2 : Engine oils labeled Energy Conserving Oil are now available. Along with other additional benefits, they contribute to fuel economy by reducing the amount of fuel necessary to overcome engine friction. Often, these improvements are difficult to measure in everyday driving, but in a year's time, they can offer significant cost and energy savings.

*3 : If the ACEA A5 engine oil is not available in your country, you are able to use ILSAC GF-3 (or above) or ACEA A3 (or above).

*4 : If the API service SM engine oil is not available in your country, you are able to use API service SL.

Recommended SAE viscosity number

⚠ CAUTION

Always be sure to clean the area around any filler plug, drain plug, or dipstick before checking or draining any lubricant. This is especially important in dusty or sandy areas and when the vehicle is used on unpaved roads. Cleaning the plug and dipstick areas will prevent dirt and grit from entering the engine and other mechanisms that could be damaged.

Engine oil viscosity (thickness) has an effect on fuel economy and cold weather operating (engine start and engine oil flowability). Lower viscosity engine oils can provide better fuel economy and cold weather performance, however, higher viscosity engine oils are required for satisfactory lubrication in hot weather. Using oils of any viscosity other than those recommended could result in engine damage. When choosing an oil, consider the range of temperature your vehicle will be operated in before the next oil change. Proceed to select the recommended oil viscosity from the chart.

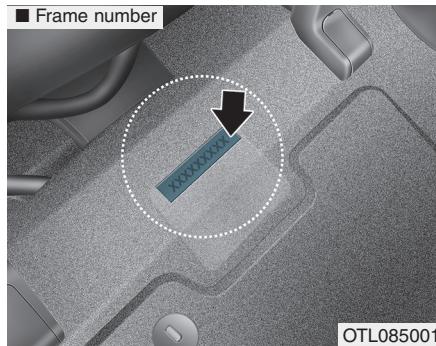
Temperature Range for SAE Viscosity Numbers										
Temperature	°C	-30	-20	-10	0	10	20	30	40	50
	(°F)	-10	0	20	40	60	80	100	120	
Gamma 1.6 *1								20W-50		
								15W-40		
								10W-30		
								5W-30, 5W-40		
Nu 2.0 *2								10W-30		
								5W-20, 5W-30		

*1 : For better fuel economy, it is recommended to use the engine oil of a viscosity grade 5W-30 (ACEA A5 or above). However, if the engine oil is not available in your country, select the proper engine oil using the engine oil viscosity chart.

*2 : For better fuel economy, it is recommended to use the engine oil of a viscosity grade SAE 5W-20 (API SM / ILSAC GF-4 / ACEA A5 or above). However, if the engine oil is not available in your country, select the proper engine oil using the engine oil viscosity chart.

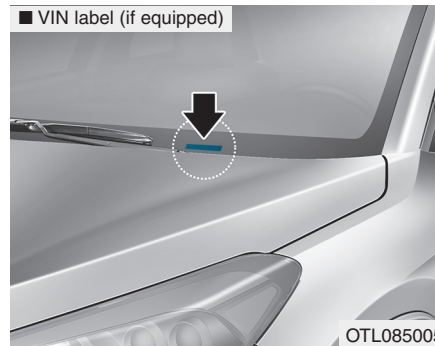


VEHICLE IDENTIFICATION NUMBER (VIN)



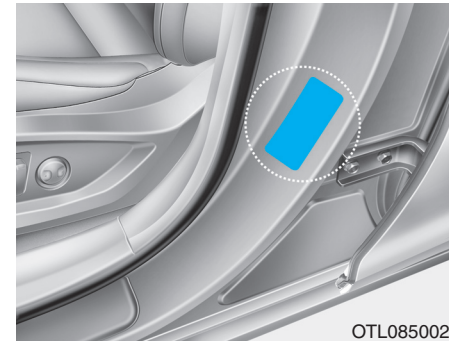
The vehicle identification number (VIN) is the number used in registering your car and in all legal matters pertaining to its ownership, etc.

The number is punched on the floor under the passenger seat. To check the number, open the cover.



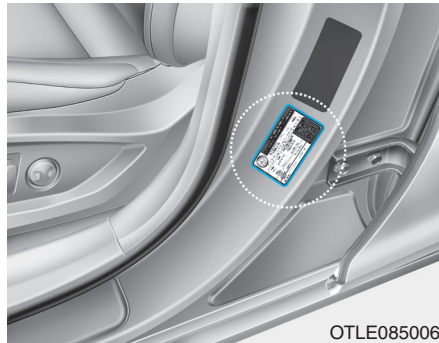
The VIN is also on a plate attached to the top of the dashboard. The number on the plate can easily be seen through the windshield from outside.

VEHICLE CERTIFICATION LABEL



The vehicle certification label attached on the driver's side center pillar gives the Vehicle Identification Number (VIN).

TIRE SPECIFICATION AND PRESSURE LABEL

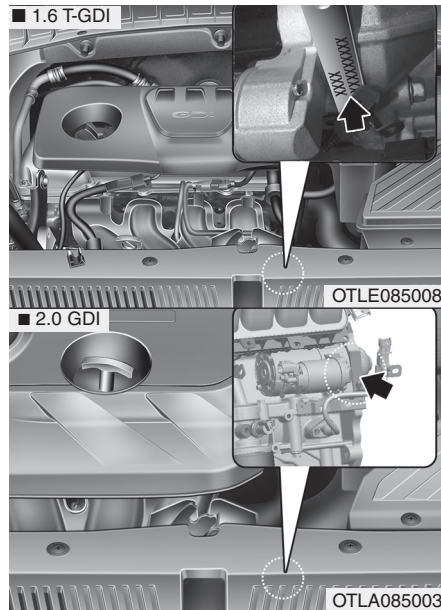


OTLE085006

The tires supplied on your new vehicle are chosen to provide the best performance for normal driving.

The tire label located on the driver's side center pillar gives the tire pressures recommended for your car.

ENGINE NUMBER



The engine number is stamped on the engine block as shown in the drawing.