

Specifications

Dimensions	8-2
Engine	8-2
Bulb Wattage	8-3
Tires and Wheels	8-5
Volume and Weight.....	8-6
Air Conditioning System.....	8-6
Recommended Lubricants and Capacities	8-7
Recommended SAE Viscosity Number	8-9
Vehicle Identification Number (VIN)	8-10
Vehicle Certification Label.....	8-10
Tire Specification and Pressure Label	8-11
Engine Number	8-11

DIMENSIONS

Items		mm (in)
Overall length		4,980 (196.06)
Overall width		1,975 (77.75)
Overall height		1,750 (68.89)
Front tread	245/60 R18	1,708 (67.24)
	245/50 R20	1,708 (67.24)
Rear tread	245/60 R18	1,716 (67.56)
	245/50 R20	1,716 (67.56)
Wheelbase		2,900 (114.17)

ENGINE

Item	Gasoline 3.8 GDI
Displacement cc (cu. in)	3,778 (230.55)
Bore x Stroke mm (in.)	96 x 87 (3.78 x 3.43)
Firing order	1-2-3-4-5-6
No. of cylinders	6, V-type

BULB WATTAGE

Light Bulb			Bulb Type	Wattage	
Front	Headlamp	Low	Type A	HB3	60
			Type B	LED	LED
		High	Type A	H7	55
			Type B	LED	LED
	Daytime running lamp(DRL) & Parking lamp		Type A	LED	LED
			Type B	LED	LED
	Turn signal lamp			LED	LED
	Turn signal lamp (Outside mirror)			LED	LED
Side marker lamp			LED	LED	
Rear	Tail lamp		Type A	P28/8W	28/8
			Type B	LED	LED
	Tail/Stop lamp		Type A	P28/8W	28/8
			Type B	LED	LED
	Turn signal lamp		Type A	P28/8W	28/8
			Type B	LED	LED
	Side marker lamp		Type A	LED	LED
			Type B	LED	LED
	Back up lamp			P21W	21
	Rear fog lamp			LED	LED
High mounted stop lamp			LED	LED	
License plate lamp			W5W	5	

Specifications

Light Bulb		Bulb Type	Wattage	
Interior	Map lamp	Type A	W8W	8
		Type B	LED	LED
	Room lamp	Type A	W8W	28/8
		Type B	LED	LED
	Luggage compartment lamp	Type A	FESTOON	8
		Type B	LED	LED
	Vanity mirror lamp	Type A	5W	5
		Type B	LED	LED
	Grove box lamp	FESTOON	5	

TIRES AND WHEELS

Item	Tire Size	Wheel Size	Cold tire inflation pressure, kPa (psi)		Wheel Lug Nut Torque kgf·m (lbf·ft, N·m)
			Front	Rear	
Full size tire	245/60 R18	7.5J X 18	240 (35)	240 (35)	11~13 (79~94,107~127)
	245/50 R20	7.5J X 20			
Compact spare tire	T155/90 R18	4.0T X 18	420 (60)		

NOTICE

- It is permissible to add 20 kPa (3 psi) to the standard tire pressure specification if colder temperatures are expected soon. Tires typically loose 7 kPa (1 psi) for every 7°C (12°F) temperature drop. If extreme temperature variations are expected, recheck your tire pressure as necessary to keep them properly inflated.
- An air pressure generally decreases, as you drive up to a high-altitude area above sea level. Thus, if you plan to drive a high-altitude area, check the tire pressures in advance. If necessary, inflate them to a proper level (Air inflation per altitude: +10 kPa/1 km (+2.4 psi/1 mile)).

CAUTION

When replacing tires, use the same size originally supplied with the vehicle.
Using tires of a different size can damage the related parts or not work properly.

VOLUME AND WEIGHT

Items		3.8 GDI	
		2WD	AWD
Gross vehicle weight	7 Seater kg (lbs.)	2,600 (5,732)	2,663 (5,871)
	8 Seater kg (lbs.)	2,600 (5,732)	2,663 (5,871)
Luggage volume (SAE) l (cu. ft)		Behind 1 st row : 2,447 (86.41) Behind 2 nd row : 1,297 (45.80) Behind 3 rd row : 509 (17.98)	


AIR CONDITIONING SYSTEM

Items	Weight of Volume	Classification
Refrigerant g (oz.)	900 (31.75) ± 25 (0.88)	R134a
Compressor lubricant cc (oz.)	180 (6.35)	PAG

Contact an authorized HYUNDAI dealer for more details.

RECOMMENDED LUBRICANTS AND CAPACITIES

To help achieve proper engine and powertrain performance and durability, use only lubricants of the proper quality. The correct lubricants also help promote engine efficiency that results in improved fuel economy.

Lubricant	Volume	Classification
Engine oil ^{*1} ^{*2} (drain and refill) Recommends 	6.5 l (6.87 US qt.)	ACEA A5 or above ^{*3} / 5W-30 /(SAE Viscosity Number)
Automatic transmission fluid	7.0 l (7.4 US qt.)	MICHANG ATF SP-IV, SK ATF SP-IV, NOCA ATF SP-IV, HYUNDAI genuine ATF SP-IV

*1 : Refer to the recommended SAE viscosity numbers on the 9 page.

*2 : Engine oils labeled Energy Conserving Oil are now available. Along with other additional benefits, they contribute to fuel economy by reducing the amount of fuel necessary to overcome engine friction. Often, these improvements are difficult to measure in everyday driving, but in a year's time, they can offer significant cost and energy savings.

*3 : If the ACEA A5 engine oil is not available in your country, you are able to use API SM & ILSAC GF-4 (or above) or ACEA A3.

Specifications

Lubricant	Volume	Classification
Transfer case oil (AWD)	0.7 l (0.74 US qt.)	HYPOID GEAR OIL API GL-5, SAE 75W/85 (SK HCT-5 GEAR OIL 75W/85 or EQUIVALENT)
Rear differential oil (AWD)	0.7 l (0.74 US qt.)	
Coolant	8.9 l (9.4 US qt.)	Mixture of antifreeze and water (Phosphate-based Ethylene glycol coolant for aluminum radiator)
Brake fluid	As required	FMVSS116 DOT-4
Fuel	71 l (18.75 US gal.)	Refer to "Fuel requirements" in the Foreword chapter.

Recommended SAE viscosity number

CAUTION

Always be sure to clean the area around any filler plug, drain plug, or dipstick before checking or draining any lubricant. This is especially important in dusty or sandy areas and when the vehicle is used on unpaved roads. Cleaning the plug and dipstick areas will prevent dirt and grit from entering the engine and other mechanisms that could be damaged.

Engine oil viscosity (thickness) has an effect on fuel economy and cold weather operating (engine start and engine oil flowability). Lower viscosity engine oils can provide better fuel economy and cold weather performance, however, higher viscosity engine oils are required for satisfactory lubrication in hot weather.

Using oils of any viscosity other than those recommended could result in engine damage.

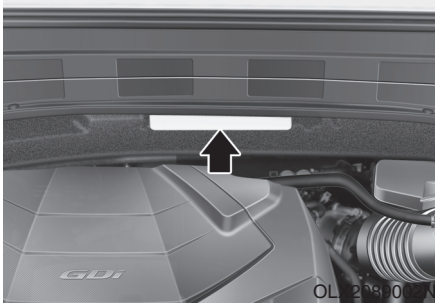
When choosing an oil, consider the range of temperature your vehicle will be operated in before the next oil change. Proceed to select the recommended oil viscosity from the chart.

Temperature Range for SAE Viscosity Numbers										
Temperature	°C	-30	-20	-10	0	10	20	30	40	50
	(°F)	-10	0	20	40	60	80	100	120	
Engine Oil *1		10W-30								
		5W-30								

*1 : For better fuel economy, it is recommended to use the engine oil of a viscosity grade SAE 5W-30. However, if the engine oil is not available in your country, select the proper engine oil using the engine oil viscosity chart.

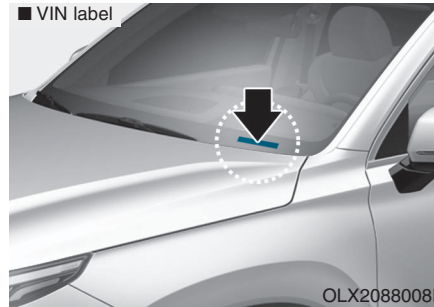


VEHICLE IDENTIFICATION NUMBER (VIN)



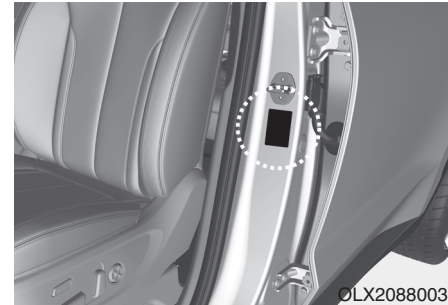
The vehicle identification number (VIN) is the number used in registering your car and in all legal matters pertaining to its ownership, etc.

The number is punched on the engine compartment frame and back side of the engine.



The VIN is also on a plate attached to the top of the dashboard. The number on the plate can easily be seen through the windshield from outside.

VEHICLE CERTIFICATION LABEL



The vehicle certification label attached on the driver's side center pillar gives the Vehicle Identification Number (VIN).

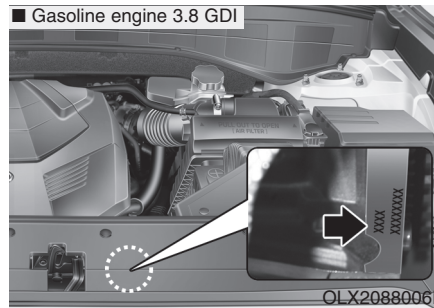
TIRE SPECIFICATION AND PRESSURE LABEL



The tires supplied on your new vehicle are chosen to provide the best performance for normal driving.

The tire label located on the driver's side center pillar gives the tire pressures recommended for your car.

ENGINE NUMBER



The engine number is stamped on the engine block as shown in the drawing.