

Specifications

Dimensions	8-2
Engine	8-2
Bulb Wattage	8-3
Tires and Wheels	8-5
Volume and Weight.....	8-6
Air Conditioning System.....	8-6
Recommended Lubricants and Capacities	8-7
Recommended SAE viscosity number	8-9
Vehicle Identification Number (VIN)	8-10
Vehicle Certification Label	8-10
Tire Specification and Pressure Label	8-11
Engine Number	8-11

DIMENSIONS

Items		mm (in)
Overall length		4,165 (163.97)
Overall width		1,800 (70.86)
Overall height		1,550 (61.02) / 1,565 (61.61)* ¹
Front tread	205/60 R16	1,575 (62.0)
	215/55 R17	1,563 (61.53)
	235/45 R18	1,559 (61.37)
Rear tread	205/60 R16	1,584 (62.36)
	215/55 R17	1,572 (61.88)
	235/45 R18	1,568 (61.73)
Wheelbase		2,600 (102.36)

*¹ : with roof rack

ENGINE

Items		Gamma 1.6 Turbo-GDI	Nu 2.0 MPI
Displacement	cc (cu. in.)	1,591 (97.09)	1,999 (121.98)
Bore x Stroke	mm (in.)	77x85.4 (3.03x3.36)	81x97 (3.18x3.82)
Firing order		1-3-4-2	1-3-4-2
No. of cylinders		In-line 4 cylinder	In-line 4 cylinder

BULB WATTAGE

Light Bulb		Bulb Type	Wattage	
Front	Headlamp	Low (Type A)	H7	55
		High (Type A)	H7	55
		Low (Type B)	LED	LED
		High (Type B)	LED	LED
		Cornering lamp	H7	55
	Turn signal lamp	PY28/8W	28	
	Side marker	LED	LED	
	Turn signal lamp (Outside mirror)	LED	LED	
	Daytime running lamp (DRL) / position lamp	LED	LED	
Fog lamp	H8	35		
Rear	Rear combination lamp	Stop/Tail (Type A)	P21/5W	21/5
		Tail (Type A)	W5W	5
		Stop/Tail (Type B)	LED	LED
		Turn signal	P21W	21
		Back up	P21W	21
	High mounted stop lamp	LED	LED	
	Side marker	Type A	W5W	5
		Type B	LED	LED
	License plate lamp	W5W	5	

Specifications

	Light Bulb	Bulb Type	Wattage
Interior	Map lamp	W10W	10
	Room lamp (with sunroof)	FESTOON	10
	Room lamp (without sunroof)	FESTOON	8
	Sunvisor lamp	FESTOON	5
	Tailgate room lamp	FESTOON	10
	Glove box lamp	FESTOON	5

TIRES AND WHEELS

Item	Tire Size	Wheel Size	Cold tire inflation pressure kPa(psi)		Wheel Lug Nut Torque kgf·m (lbf·ft, N·m)
			Front	Rear	
Full size tire	205/60 R16	6.5J x 16	230 (33)	230 (33)	11~13 (79~94,107~127)
	215/55 R17	7.0J x 17			
	235/45 R18	7.5J x 18			
Compact spare tire	T125/80 D16	4.0T x 16	420 (60)		

NOTICE

- It is permissible to add 20 kPa (3 psi) to the standard tire pressure specification if colder temperatures are expected soon. Tires typically loose 7 kPa (1 psi) for every 7°C (12°F) temperature drop. If extreme temperature variations are expected, recheck your tire pressure as necessary to keep them properly inflated.
- An air pressure generally decreases, as you drive up to a high-altitude area above sea level. Thus, if you plan to drive a high-altitude area, check the tire pressures in advance. If necessary, inflate them to a proper level (Air inflation per altitude: +10 kPa/1 km (+2.4 psi/1 mile)).

CAUTION

When replacing tires, use the same size originally supplied with the vehicle.
Using tires of a different size can damage the related parts or not work properly.

VOLUME AND WEIGHT

Items	Gamma 1.6 Turbo-GDI		Nu 2.0 MPI	
	DCT (2WD)	DCT (AWD)	A/T (2WD)	A/T (AWD)
Gross vehicle weight kg (lbs.)	1,835 (4,045)	1,930 (4,255)	1,805 (3,979)	1,900 (4,189)
Luggage volume (SAE) l (cu. ft.)	Behind 1 st row : 1,296 (45.7) Behind 2 nd row : 544 (19.2)			

A/T : Automatic transmission

DCT : Dual clutch transmission


AIR CONDITIONING SYSTEM

Items	Weight of Volume	Classification
Refrigerant g (oz.)	450 ± 25 (15.87 ± 0.88)	R-1234yf
Compressor lubricant cc (oz.)	120 ± 10 (4.23 ± 0.35)	PAG

Contact an authorized HYUNDAI dealer for more details.

RECOMMENDED LUBRICANTS AND CAPACITIES

To help achieve proper engine and powertrain performance and durability, use only lubricants of the proper quality. The correct lubricants also help promote engine efficiency that results in improved fuel economy. These lubricants and fluids are recommended for use in your vehicle.

Lubricant		Volume	Classification
Engine oil * ¹ * ² (drain and refill) Recommends 	1.6 Turbo-GDI	4.5 l (4.76 US qt.)	API Latest (ILSAC Latest) or ACEA A5/B5 * ⁴
	2.0 MPI	4.0 l (4.23 US qt.)	SAE 5W-20/API Latest (ILSAC Latest)
Automatic transmission fluid	2.0 MPI	6.7 l (7.08 US qt.)	MICHANG ATF SP-IV, SK ATF SP-IV, NOCA ATF SP-IV, HYUNDAI genuine ATF SP-IV
Dual clutch transmission fluid	1.6 Turbo-GDI	1.9~2.0 l (2.01~2.11 US qt.)	HK DCTF 70W (SK) SPIRAX S6 GHME 70W DCTF (H.K.SHELL) GS DCTF HD 70W (GS CALTEX) (API GL-4, SAE 70W)

Specifications

Lubricant		Volume	Classification
Transfer case oil (AWD)	1.6 Turbo-GDI	0.47~0.52 l (0.44 ~ 0.49 US qt.)	HYPOID GEAR OIL API GL-5, SAE75W/90 (SHELL HD AXLE OIL 75W90 or equivalent)
	2.0 MPI	0.38~0.42 l (0.36~0.4 US qt.)	
Rear differential oil (AWD)		0.47~0.52 l (0.44~0.49 US qt.)	
Coolant	1.6 Turbo-GDI	7.1 l (7.5 US qt.)	Mixture of antifreeze and water (Phosphate-based Ethylene glycol coolant for aluminum radiator)
	2.0 MPI	6.5 l (6.8 US qt.)	
Brake fluid		0.7 ~ 0.8 l (0.74~0.85 US qt.)	SAE J1704 DOT-4 LV, FMVSS 116 DOT-4, ISO 4925 CLASS-6
Fuel		50 l (13.2 US gal.)	Refer to "Fuel requirements" in the Foreword chapter.

*1 : Refer to the recommended SAE viscosity numbers on the next page.

*2 : Engine oils labeled Energy Conserving Oil are now available. Along with other additional benefits, they contribute to fuel economy by reducing the amount of fuel necessary to overcome engine friction. Often, these improvements are difficult to measure in everyday driving, but in a year's time, they can offer significant cost and energy savings.

*3 : If the API service SM engine oil is not available in your country, you are able to use API service SL.

*4 : If the ACEA A5 engine oil is not available in your country, you are able to use ILSAC GF-3 (or above) or ACEA A3 (or above).

Recommended SAE viscosity number

CAUTION

Always be sure to clean the area around any filler plug, drain plug, or dipstick before checking or draining any lubricant. This is especially important in dusty or sandy areas and when the vehicle is used on unpaved roads. Cleaning the plug and dipstick areas will prevent dirt and grit from entering the engine and other mechanisms that could be damaged.

Engine oil viscosity (thickness) has an effect on fuel economy and cold weather operating (engine start and engine oil flowability). Lower viscosity engine oils can provide better fuel economy and cold weather performance, however, higher viscosity engine oils are required for satisfactory lubrication in hot weather.

Using oils of any viscosity other than those recommended could result in engine damage.

When choosing an oil, consider the range of temperature your vehicle will be operated in before the next oil change. Proceed to select the recommended oil viscosity from the chart.

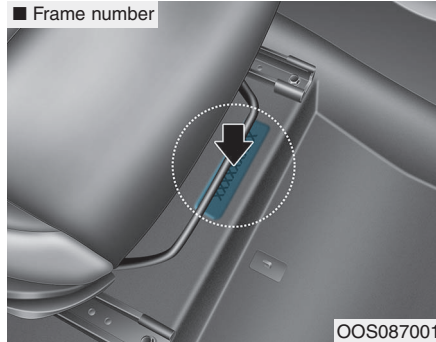
		Temperature Range for SAE Viscosity Numbers									
Temperature		°C	-30	-20	-10	0	10	20	30	40	50
		(°F)	-10	0	20	40	60	80	100	120	
Engine Oil	Gamma 1.6 Turbo-GDI *1									20W-50	
											15W-40
										10W-30	
										5W-30, 5W-40	
Nu 2.0 MPI *2										10W-30	
										5W-20, 5W-30	

*1 : For better fuel economy, it is recommended to use the engine oil of a viscosity grade 5W-30 (API Latest (ILSAC Latest) or ACEA A5 or above). However, if the engine oil is not available in your country, select the proper engine oil using the engine oil viscosity chart.

*2 : For better fuel economy, it is recommended to use the engine oil of a viscosity grade SAE 5W-20/API Latest (ILSAC Latest). However, if the engine oil is not available in your country, select the proper engine oil using the engine oil viscosity chart.

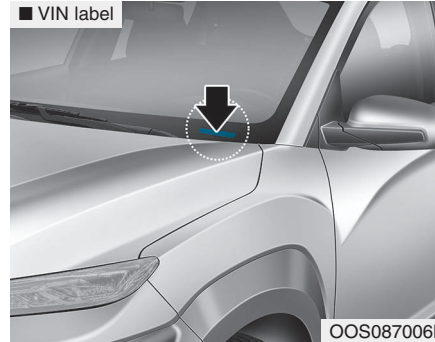


VEHICLE IDENTIFICATION NUMBER (VIN)



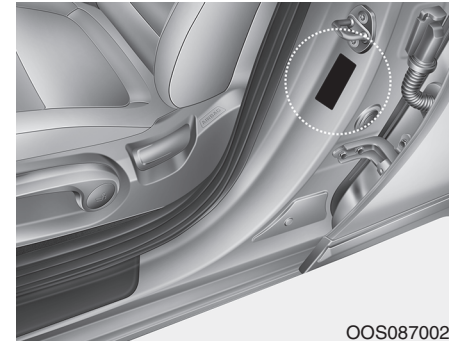
The vehicle identification number (VIN) is the number used in registering your car and in all legal matters pertaining to its ownership, etc.

The number is punched on the floor under the passenger seat. To check the number, open the cover.



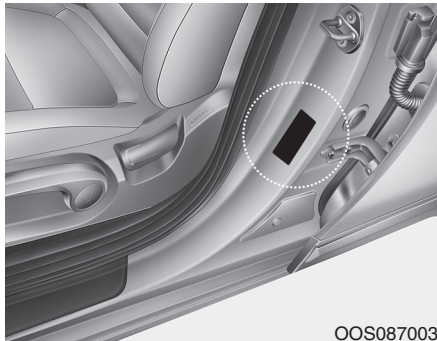
The VIN is also on a plate attached to the top of the dashboard. The number on the plate can easily be seen through the windshield from outside.

VEHICLE CERTIFICATION LABEL



The vehicle certification label attached on the driver's side center pillar gives the Vehicle Identification Number (VIN).

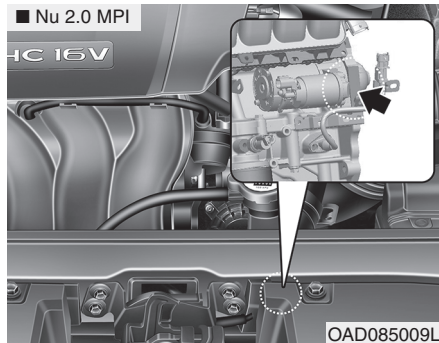
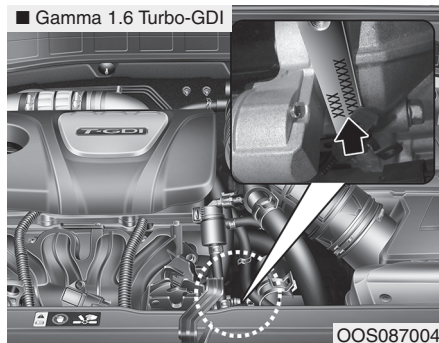
TIRE SPECIFICATION AND PRESSURE LABEL



The tires supplied on your new vehicle are chosen to provide the best performance for normal driving.

The tire label located on the driver's side center pillar gives the tire pressures recommended for your car.

ENGINE NUMBER



The engine number is stamped on the engine block as shown in the drawing.