



ELANTRA GT  
2017



# WHAT MAKES A HYUNDAI?

Incredibly rigorous, demanding and relentless quality assurance testing programs. That's what. After all, to sell more than 5 million vehicles a year around the world, our engineers and designers need to deliver a top quality product with the perfect combination of efficiency, craftsmanship and engaging drive that is truly world-class. What you may not know is that Hyundai takes unprecedented steps, pushing beyond the old, conventional way of doing things to deliver New Thinking, so we can provide you with New Possibilities.

Better crash safety requires stronger steel. Precise handling requires stiffer steel. And fuel efficiency requires lighter steel. How do you find steel that lives up to such stringent demands? If you're Hyundai, you become the only major automaker to make it yourself. New thinking is what happens when our vehicle engineers and metallurgists work side-by-side.

But making steel is only part of the story. World-class vehicles need world-class design that pushes the industry forward. Hyundai's three design centres – in Korea, the U.S. and Europe – compete against each other for the right to bring you new vehicles. The result of that competition is remarkable aerodynamic designs that not only stand out, but also improve fuel efficiency. On the inside, our fanatical dedication to perfection delivers interior cabins that are comfortable, intuitive and ergonomic.

We want you to feel confident because we are. We can back our vehicles with a 5-year/100,000 km Comprehensive Limited Warranty<sup>†</sup> because they have been tested across the world in the most extreme driving conditions imaginable. To deliver the durability and reliability you demand, our vehicles endure cold weather and extreme heat testing in areas like Canada's Arctic and our proving grounds in the Mojave Desert. Some are even tested on Germany's world-famous Nürburgring circuit. Our expert drivers test, tune, retest, and retune Hyundai vehicles to not only endure, but to deliver a rewarding driving experience that you can count on, kilometre after kilometre.

We do this – and more – because we want to exceed your every expectation. That's the Hyundai difference.





## STRIKING DESIGN

The 2017 Elantra GT makes a bold impression with its unique European, sport-inspired design. The sculpted hood creases sweep around the stylish projector headlights that frame the hexagonal grille, while muscular wheel arches surround the available 17" alloy wheels. Available LED tail lights wrap around the curved body, reinforcing the sleek and striking design of the exterior.



AVAILABLE LED SIDE-MIRROR TURN SIGNAL REPEATERS



AVAILABLE 17" ALLOY WHEELS



AVAILABLE HIDDEN REARVIEW CAMERA

# IMPRESSIVE STYLE, SPACE, AND COMFORT

Inside the expansive cabin of the 2017 Elantra GT you will discover an impressive list of available features at your fingertips. These include a 7.0" touch-screen navigation system with rearview camera and proximity keyless entry with push-button ignition. More impressive, however, might be the wealth of standard features ready to ease your travels, such as heated front seats, a cooled glove box and steering wheel-mounted audio, cruise and Bluetooth® controls. Now add in a level of comfort and interior space you might not expect from a vehicle of its size, and you've got your hands on the wheel of a very impressive hatchback.



**AVAILABLE 7.0" TOUCH-SCREEN NAVIGATION SYSTEM AND REARVIEW CAMERA**



**STANDARD STEERING WHEEL-MOUNTED AUDIO/CRUISE/BLUETOOTH® CONTROLS**



**AVAILABLE PANORAMIC SUNROOF**



May not be exactly as shown.



## DYNAMIC RIDE AND HANDLING

Nothing beats the open road. Take it on with the 2017 Elantra GT and your journeys will come alive. With control, responsiveness and agility all given top priority, you'll find yourself enjoying the pure sensation of driving all over again. Powered by a 2.0L GDI engine with 173 horsepower, the car delivers a smooth, sturdy ride, with exceptional shock absorption and high-speed stability.



## FEEL THE CONFIDENCE

The 2017 Elantra GT is built to drive with peace of mind. A highly refined chassis minimizes body roll while providing exceptional response and feedback, allowing you to react to the road with confidence. Take a turn, and the standard Vehicle Stability Management (VSM) with Electronic Stability Control (ESC) helps you maintain a perfect line. Enjoy the drive and feel the driving confidence of the Elantra GT.



**DRIVER'S KNEE AIRBAG**

# 2017

## ELANTRA GT FEATURES



### COOLED GLOVE BOX.

The standard cooled glove box on the 2017 Elantra GT is a must-have on those hot summer days to help keep your water and snacks fresh.



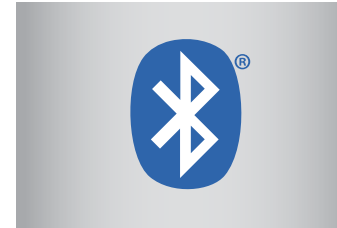
### PANORAMIC SUNROOF.

The available panoramic sunroof spans almost the entire length of the cabin for class defying openness and luxury, making every drive a scenic one.



### DRIVER SELECTABLE STEERING MODE (DSSM).

This innovative feature lets the driver customize the control and feel of the steering right from the steering wheel. Select from three options: Normal, Comfort and Sport.



### BLUETOOTH® CONNECTIVITY.

The standard Bluetooth® hands-free phone system lets users make hands-free phone calls and stream music wirelessly through the Elantra GT's audio system.



### PROJECTION HEADLIGHTS.

The 2017 Elantra GT features an assertive hexagonal front grille. Sculpted hood creases add dimension and definition, framed by stylish projection headlights.



### FLEXIBLE STORAGE OPTIONS.

A few of the convenient storage areas you'll find in the Elantra GT include: a front centre-console storage tray, an overhead sunglasses holder and a rear-seat centre armrest with cup holders. For added flexibility, there is a 60/40-split fold-flat rear seatback and an available hidden cargo-area storage compartment.



### 7.0" TOUCH-SCREEN NAVIGATION SYSTEM.

An available 7.0" LCD touch-screen navigation system helps guide you from point A to point B for trouble-free direction. The system also provides added peace of mind when reversing with the available hidden rearview camera.



### PROXIMITY KEYLESS ENTRY WITH PUSH-BUTTON IGNITION.

The available proximity key allows the Elantra GT to recognize your key fob from your pocket or purse so that opening the driver door is as easy as pressing the door handle button. Once inside, get settled, buckle up, and start your engine with the push-button start.



### HIDDEN REARVIEW CAMERA.

This innovative design allows the available rearview camera to fold into the exterior sculpting of the Elantra GT when not in use to help keep the lens protected and clean.



### LED TAIL LIGHTS.

Available LED tail lights not only wrap around the body of the Elantra GT to enhance its style, they also provide increased visibility day and night.



# 5

5-YEAR/100,000 KM  
**COMPREHENSIVE LIMITED  
WARRANTY\***

5-YEAR/100,000 KM  
**POWERTRAIN WARRANTY**

5-YEAR/100,000 KM  
**EMISSION WARRANTY**

5-YEAR/UNLIMITED KM  
**ROADSIDE ASSISTANCE  
PROGRAM\*\***

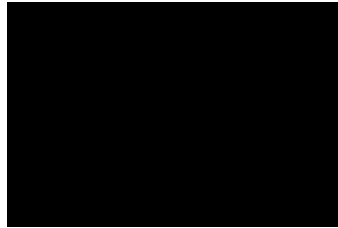


You will see that a number of our vehicles have been awarded with multiple awards from the most reputable third party organizations, so you can take their word when it comes to the quality, design and safety of our vehicles. This quality is equally matched by the quality of our warranty. We stand confidently behind our products to give you the ultimate peace of mind with a 5-year/100,000 km comprehensive limited warranty, one of the best-backed warranties in Canada. We also provide a 5-year/unlimited km Roadside Assistance Program\*\* featuring flat tire changing, lockout service and more. Just one toll-free call away, 24 hours a day.

THERE'S NO SUBSTITUTE FOR  
**PEACE OF MIND**

# COLOURS

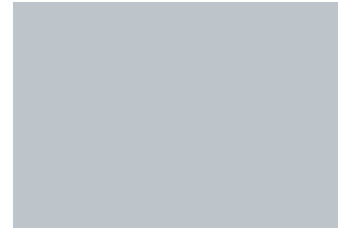
## EXTERIOR



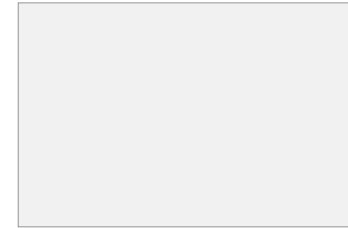
**SPACE BLACK**



**IRON GREY**



**PLATINUM SILVER**



**POLAR WHITE**



**STAR GAZING BLUE**

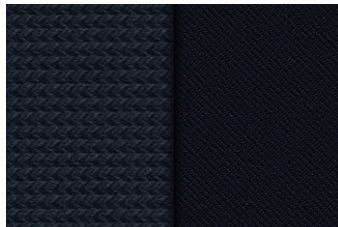


**MARINA BLUE**



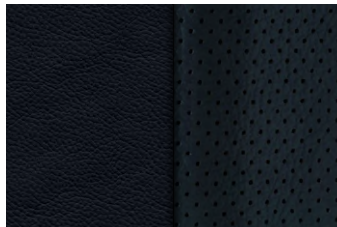
**FIERY RED**

## INTERIOR



**BLACK CLOTH**

GL, SE and GLS Tech models



**BLACK LEATHER**

Limited model

## WHEELS



**16" steel wheel**  
Standard on GL model



**16" alloy wheel**  
Standard on SE model



**17" alloy wheel**  
Standard on GLS Tech  
and Limited models

Choice of interior colour depends upon exterior colour and/or model selection. Due to print production process, the colours shown throughout this brochure may vary slightly from the actual hue. Textures may not be exactly as shown. Visit [hyundaicanada.com](http://hyundaicanada.com) or see your dealer for details.

### ROOF RACKS.

This durable, quick-locking roof rack system lets you transport cargo easily, without sacrificing interior room. Remove when not in use.



### BLOCK HEATER.

Engineered for your Hyundai, a block heater will help ensure fast starts and reduce engine wear in extreme weather.



### CARGO TRAY.

Add years to the interior of your Hyundai by protecting it from spills and messy loads with a durable, custom-fit cargo tray.



### REAR BUMPER PROTECTOR.

Help protect the finish on your bumper from chips and scratches, when loading and unloading the cargo area, with this durable, custom-fit rear bumper protector.



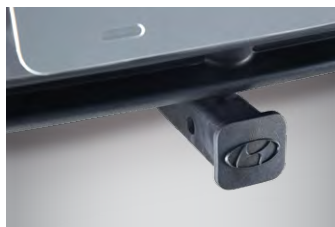
### SIDE VISORS.

Complement your vehicle with a sleek and durable set of side visors that will help reduce glare while providing you with fresh air. Custom made for your vehicle using high quality reinforced tinted acrylic plastic, these visors will look good on your vehicle for years to come.



### PREMIUM ALL WEATHER FLOOR LINERS.

Premium all weather floor liners were designed to cover the interior carpet providing maximum protection against the elements that other mats cannot offer. Their unique and durable design features a non-slip surface for added comfort and a long lasting premium look. Remove carpet mats prior to installation.



### ACCESSORY FRAME.

An accessory frame makes it quick and easy to attach hitch-mounted cargo equipment, such as bikes and ski racks. Includes end cap (Frame not intended for towing).



### CARGO NET.

A custom-fit cargo net ensures everything you're transporting remains organized and in place by preventing items from sliding around.

For more information on additional accessories please visit [hyundaicanada.com](http://hyundaicanada.com), or visit your dealer for details.

ACCESSORIES

# ELANTRA GT SPECIFICATIONS

GL	STANDARD EQUIPMENT INCLUDES:	
2.0L GDI 173 hp, 4-cylinder engine with Dual Continuously Variable Valve Timing (D-CVVT)	Anti-lock Braking System (ABS) with Electronic Brake-force Distribution (EBD)	
6-speed manual transmission	Driver's seat height adjuster	
16" steel wheels	Driver Selectable Steering Mode (DSSM)	
4-way manually-adjustable front passenger's seat with adjustable head restraint	Front centre console with dual cup holders, fixed armrest and storage compartment	
6-way manually-adjustable driver's seat with adjustable head restraint	iPod®/USB/auxiliary connectivity	
AM/FM/SiriusXM™/CD/MP3 audio system with 6 speakers	Power door locks and windows with driver's auto-down	
Airbags <sup>1</sup> (7): dual front, front seat-mounted side-impact, roof-mounted side curtain and driver's knee airbag	Rear spoiler	
Manual air conditioning	Tilt-and-telescopic steering wheel	
Automatic headlights	Vehicle Stability Management (VSM), Electronic Stability Control (ESC) with Traction Control System (TCS) <sup>2</sup>	
Bluetooth® hands-free phone system with voice recognition	Steering wheel-mounted telephone, audio and cruise controls	
Heated front seats	Optional: 6-speed automatic transmission with SHIFTRONIC® manual mode	
Remote keyless entry system with alarm		
SE	INCLUDES GL STANDARD EQUIPMENT PLUS:	
6-speed automatic transmission with SHIFTRONIC® manual mode	Panoramic sunroof	
16" alloy wheels	Fog lights	
	Premium front grille	
GLS TECH	INCLUDES SE STANDARD EQUIPMENT PLUS:	
17" aluminum alloy wheels	Leather-wrapped steering wheel and gearshift knob	
8-way power-adjustable driver's seat with lumbar support	LED side mirror turn signal repeaters	
Cloth door trim inserts	Proximity keyless entry with push-button ignition	
Hidden cargo-area storage compartment	Rearview camera	
7.0" touch-screen navigation system		
LIMITED	INCLUDES GLS TECH STANDARD EQUIPMENT PLUS:	
Chrome window-belt moulding	Leather seating surfaces	
Dual zone automatic temperature control	LED tail lights	
Simulated leather door trim inserts	Driver's window auto-up with pinch protection	
Front sliding centre armrest	Front windshield wiper de-icer	
Auto-dimming inside rearview mirror with HomeLink®		

ENGINE	
Type	2.0L (1,999cc) Normally aspirated inline 4-cylinder
Cam design	D-CVVT
Valve train	16-valve swing arms with hydraulic lash adjuster
Block/head composition	Aluminum
Horsepower @ RPM	173 @ 6,500
Torque (lb-ft) @ RPM	154 @ 4,700
Bore and stroke (mm)	81 x 97
Compression ratio (:1)	11.5
Fuel delivery	Gasoline Direct Injection (GDI)
Recommended fuel	Unleaded
ELECTRICAL	
Ignition system type	Distributorless
Starter rating	1.2 kW
Battery rating	68 AH
Alternator rating	13.5 V 90 A
BRAKING	
Type	Anti-lock Braking System (ABS) with Electronic Brake-force Distribution (EBD)
Parking brake	Mechanical
STEERING	
Type	Rack and Pinion Motor Driven Power Steering (R-MDPS)
Overall ratio (:1)	14.7
Turns (lock to lock)	2.78
Turning diameter (m)	10.6
SUSPENSION	
Front	MacPherson strut with coil springs
Rear	Torsion axle
Front stabilizer bar (mm)	22.0
Rear stabilizer bar	V-Beam
BODY / CHASSIS	
Type	Unibody
Primary materials	High tensile steel
Coefficient of drag (cd)	0.30
WEIGHTS / CAPACITIES	
Curb weight MT/AT (kg)	1,293 – 1,358 / 1,317 – 1,385
Gross weight MT/AT (kg)	1,800
VOLUME (L)	
Passenger compartment	2,718
Cargo – Trunk	651
Total	3,369
CAPACITIES	
Fuel tank (L)	50
Engine oil (L) (filter included)	4.0
Engine coolant (L)	2.1
FUEL ECONOMY (L/100KM) <sup>^</sup> – 5-CYCLE TESTING METHOD	
	MT / AT
City	9.8 / 9.8
Highway	7.2 / 7.3
Combined	8.7 / 8.7

For more detailed specifications and information please visit [hyundaicanada.com](http://hyundaicanada.com), or visit your dealer today.

[hyundaicanada.com/elantragt](http://hyundaicanada.com/elantragt)

---



<sup>TM/®</sup>The Hyundai names, logos, product names, feature names, images and slogans are trademarks owned by Hyundai Auto Canada Corp. Specifications, features, illustrations, accessories, materials and equipment and all other information shown in this brochure are based on the latest information available at the time of publication. Although descriptions are believed to be correct, accuracy cannot be guaranteed. Hyundai Auto Canada Corp. reserves the right to make any changes or modifications at any time, without notice or obligation, including, without limitation, in colour, specifications, features, accessories, materials, equipment and models. Some vehicles are shown with optional equipment. All Hyundai warranties have no deductible. <sup>A</sup>Fuel economy figures are based on manufacturer testing and are used for comparison purposes only. Actual fuel efficiency may vary based on driving conditions and the addition of certain vehicle accessories. <sup>†</sup>Hyundai's Comprehensive Limited Warranty coverage covers most vehicle components against defects in workmanship under normal use and maintenance conditions. <sup>††</sup>Hyundai's 24-Hour Roadside Assistance Program is a limited service and does not cover certain costs or expenses. Roadside Assistance is not a warranty. <sup>‡</sup>The Supplemental Restraint (Airbag) System (SRS) is designed to work with the 3-point seatbelt system. The SRS deploys in certain frontal and/or side impact conditions where significant injury is likely. The SRS is not a substitute for seatbelts, which must still be worn at all times. Children under the age of 13 should be securely restrained in the rear seat. NEVER place a child seat in the front seat of a Hyundai vehicle. <sup>2</sup>Electronic Stability Control (ESC) and Traction Control System (TCS) are meant to enhance conscientious driving habits and are not a substitute for safe driving practices. ESC cannot control your vehicle's stability under all driving situations. No system, no matter how advanced, can overcome physics or correct poor driving. Speed, road conditions and driver steering input will affect whether ESC can help prevent loss of control. See Owner's Manual for details. iPod<sup>®</sup> is a registered trademark of Apple Inc., the SiriusXM<sup>™</sup> name is a trademark of SiriusXM Satellite Radio Inc., Bluetooth<sup>®</sup> word mark and logos are registered trademarks owned by Bluetooth SIG, Inc., and any use of such marks by Hyundai is under license. All other trademarks and trade names are those of their respective owners.

