

# All-New **SANTA FE**

2019







# The H-Factor.

What is the H-Factor? It means you can have it all.

Our company believes in pushing the boundaries and challenging conventional thinking. Our very name, “Hyundai”, stands for modernity in the Korean language and it is this one word that helps represent everything we stand for. We don’t approach vehicle development in a traditional way. Our company is structured differently. We think differently. We find the modern way. It’s our mission to offer top quality, feature-rich vehicles at an affordable price.

We offer elite quality through meticulous design and painstaking craftsmanship. Our three design centres in Korea, the U.S. and Europe compete against each other to bring you cutting-edge designs — designs that not only look stunning but are also aerodynamic and fuel efficient.

We are the only global automaker to manufacture our own steel because, simply put, we just weren’t satisfied with what was available.

We test our vehicles in areas like the Arctic, the Mojave Desert and on Germany’s world-famous Nürburgring circuit to deliver the durability and reliability you demand. And not only do we package our vehicles with advanced safety and technology, we back all our vehicles with one of the best warranties in the automotive industry. This means you really can have it all, quality and value together.

That’s the H-Factor.







# Discover the all-new SANTA FE.

The all-new Santa Fe is about helping your drive become a safer drive, and it starts with the SUPERSTRUCTURE™ at its core. This frame is engineered with our Advanced High Strength Steel for superior rigidity and strength to provide added protection in the event you cannot avoid a collision from happening.

But beyond the strong foundation you are surrounded by a suite of available driver assistance technologies actively scanning your surroundings to help keep you safe on your journeys. They've been developed to help alert you to, and even avoid, unexpected dangers on the road and include the world's first Safe Exit Assist<sup>6</sup> technology.

Discover an SUV that helps you protect not only you and your passengers, but also the people around you. Introducing the all-new Santa Fe.









# Redesigned to be bigger and bolder.

The all-new cascading grille is framed by a unique twin headlamp design, comprised of LED daytime running lights positioned above the available LED headlights. This dynamic character is enhanced by a sleek roofline and bold side character line running from the headlights to tail lights forming a fluid design. Standard alloy wheels deliver a commanding presence on the road and standard roof-rack side rails provide further utility.



Standard LED daytime running lights



Available LED tail lights



Available Smart Power Liftgate



Available LED side repeaters



Available LED headlights



Available 19" alloy wheels

# Efficiently powerful.

Choose between two powerful and efficient engine options with the all-new Santa Fe. Both options are paired to a new 8-speed automatic transmission for smoother shifting and improved fuel efficiency. Add available HTRAC™ All-Wheel Drive for greater control and driving performance. Upgrade to the available 2.0L turbocharged engine to enjoy even greater capabilities with 3,500 lbs of towing capacity and 260 lb-ft of torque.

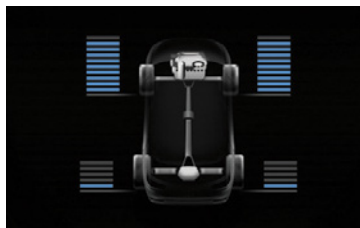


## Available HTRAC™ All-Wheel Drive (AWD)

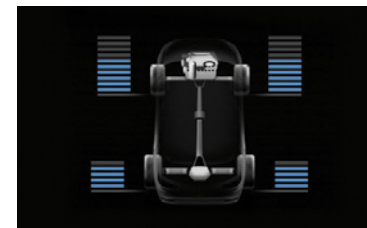
This system maximizes driving pleasure and makes performance accessible in even the most demanding conditions. What separates HTRAC™ from competing AWD systems is the ability to choose the traction distribution with HTRAC™ Intelligent Drive Modes. Each mode alters transmission mapping, power distribution, throttle responsiveness and stability control settings. In slippery conditions the system distributes power to all four wheels automatically.



**COMFORT:** Balanced, helps provide further driver confidence and stable control in all weather conditions.



**SMART:** Fuel conservation, provides improved fuel efficiency by sending power mainly to the front wheels.



**SPORT:** Dynamic control, sends up to 50 percent torque to the rear wheels for even greater agility.





**Standard 2.4L GDI engine**

185 horsepower, 178 lb-ft torque

**Available 2.0L Turbocharged GDI engine**

235 horsepower, 260 lb-ft torque



# A level of comfort and luxury you deserve.

The all-new Santa Fe provides generous head, leg and shoulder room so everyone can travel in comfort. The spacious cabin feels even larger when the available panoramic sunroof spans open on a beautiful summer day. Now choose your preferred temperature with available dual-zone control for both driver and front passenger, customize driver seating among 12 available settings, turn up the available 630-watt Infinity® audio system and take command of the road in the luxurious Santa Fe.



## **Driver comfort.**

Find perfect comfort with an available 12-way power adjustable driver's seat with lumbar support that you can keep memorized for two profiles thanks to the available integrated memory system. An available power thigh extension also offers optimal ergonomic fit for drivers looking for more leg support.



## **Stay warm in winter, and cool all summer long.**

Take on winter with standard heated front seats, heated steering wheel and available heated rear seats. Equally as pleasing are the available ventilated front seats that circulate air to keep you cool and comfortable in the summer.



## **Flexibility for everyday needs.**

Rear seating reclines for comfort, folds 60/40 to deliver flexible storage, and is available with a second-row sliding feature — making it possible to bring a child seat closer to the front passenger. The smart design also provides additional storage under the cargo floor, so you can store items out of sight. Pack up for any adventure with a total of 2,019 litres of cargo capacity when the rear seats are folded down.





Ultimate model shown.  
May not be exactly as shown.



# Elevate your journey with convenient technology.



## Surround View Monitor

Available on Luxury and Ultimate models — get multiple perspectives when you park, including an aerial view of the vehicle for a comprehensive look at your surroundings. Choose from full 360-degree, front, rear or curb-side views to help you see every angle.



8.0" touch-screen shown.

## Apple CarPlay™ and Android Auto™

Standard Apple CarPlay™ and Android Auto™ put the power of your smartphone on the standard 7.0" touch-screen. Seamlessly interact with your favourite apps, use voice commands to send text messages and stream songs from your favourite playlist. An available 8.0" touch-screen provides added convenience with a built-in navigation system, so you don't have to use your cellular data when needing directions.





Available rain-sensing wipers



Available proximity keyless entry with push-button ignition



Available Infinity® audio system with 12 speakers



Available wireless charging pad\*



### Head-Up Display

The available Head-Up Display helps you stay safe by projecting important information like speed, navigation commands and safety warnings within your line of sight on the windshield — so you can keep your eyes on the road ahead.



#### Features include:

- ✓ Complimentary 5-Year subscription with select models
- ✓ Remote Start with Climate Control
- ✓ Remote Lock/Unlock
- ✓ Find My Car
- ✓ SOS Emergency and Roadside Assistance
- ✓ Automatic Collision Notification
- ✓ Local Search powered by Google™

### BlueLink®

Once set up, our available BlueLink® connected car system conveniently enables you to locate your vehicle, remotely start the engine for advanced warming or cooling, unlock or lock the doors and can automatically call the emergency services in the event of an accident. Please see your dealer for full service-level details.



# Surround yourself with safety, including world's first technology.

Learn more about the available Hyundai SmartSense™ safety technology offered with the all-new Santa Fe:



## Forward Collision-Avoidance Assist with Pedestrian Detection<sup>1</sup>

Designed to detect a vehicle or pedestrian and warn the driver of a potential frontal collision. If the driver does not react to avoid impact, the system will apply emergency braking.



## Lane Departure Warning with Lane Keeping Assist<sup>2</sup>

Start drifting outside of your lane without signalling and this system is designed to inform you with audible and visual cues. Lane Keeping Assist will help steer you back within your lane markings if no action is taken.



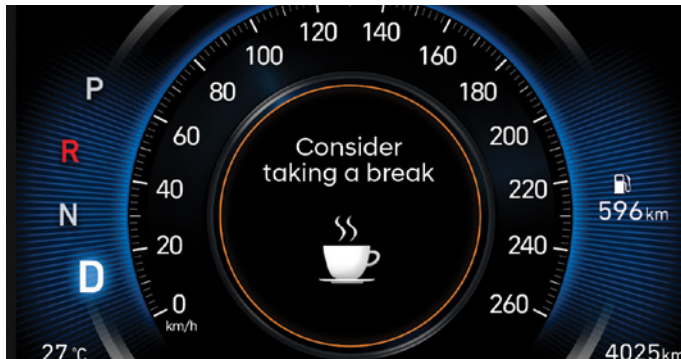
## Rear Cross-Traffic Collision-Avoidance Assist<sup>3</sup>

When reversing out of areas with low visibility, this system not only warns the driver if vehicles approach from the side — it can also apply the brakes automatically if no action is taken.



## Blind-Spot Collision-Avoidance Assist<sup>4</sup>

A new system that not only uses radar to detect when a vehicle is in the driver's blind spot, but will also help avoid a collision by gently applying brake power on the opposite tire to deter an unsafe lane change.



## Driver Attention Warning<sup>5</sup>

Designed to detect the onset of driver fatigue, this system will monitor driver input and issue a visual and audible alert if fatigue is sensed, suggesting a break.



## Safe Exit Assist<sup>6</sup> — World's First

This clever, world's first feature helps prevent accidents by temporarily locking the rear doors when detecting vehicles approaching from behind, so that rear passengers can only exit the car when it is safe to do so — even with the ignition off.





#### Rear Occupant Alert<sup>7</sup>

This all-new system is designed to prevent children and pets from being forgotten in the vehicle by using ultrasonic sensors to monitor the rear seats. Level one occurs with a pop-up message on the front dash to remind the driver to check the rear seats once the vehicle is turned off. Level two, after the vehicle is parked and locked, the ultrasonic sensors will monitor the rear seats and if movement is detected the system will honk the horn and flash the lights. When a BlueLink<sup>®</sup> subscription is active, the system will also send a text to the driver's smartphone to notify them of rear seat movement.



#### Parking Distance Warning — Reverse

Sensors embedded into the rear bumper make reverse parking easier by producing a warning sound for the driver if the rear of the vehicle gets too close to any object. As the vehicle approaches closer to the object, the warning sound will increase in frequency.



#### Adaptive Cruise Control with traffic stop and go<sup>8</sup>

Take basic cruise control to the next level of convenience. Set your pre-determined speed and distance to the vehicle ahead, and this system will automatically adjust the vehicle speed to maintain the set distance. The system will even operate in stop-and-go traffic, bringing the vehicle to a complete stop when necessary and then resuming automatically.



#### High Beam Assist

Using the front-mounted camera and light detection technology, High Beam Assist provides an extra level of convenience by automatically switching between high beam and low beam when traffic is detected ahead.

## The SUPERSTRUCTURE™

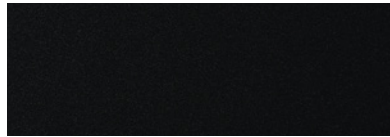
At the foundation of the all-new Santa Fe is the SUPERSTRUCTURE™, a state-of-the-art vehicle platform. Over half of the SUPERSTRUCTURE™ is composed of our Advanced High Strength Steel for exceptional stiffness and strength and features an extended application of structural adhesives to reinforce critical areas. In the event of a collision, the SUPERSTRUCTURE™ helps protect occupants inside the vehicle by absorbing harmful energy and redirecting it away from the passenger compartment.



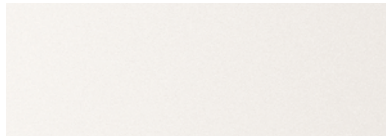


# Colours and wheels

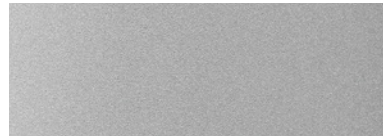
## Exterior colours\*



Twilight Black



Quartz White



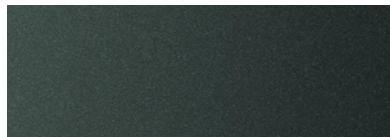
Symphony Silver



Machine Grey  
Not available on Essential model



Earthy Bronze  
Not available on Essential model



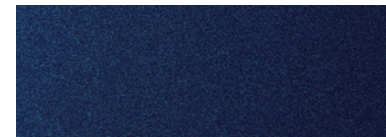
Rainforest  
Available on Luxury and Ultimate models



Lava Orange  
Available on Luxury and Ultimate models

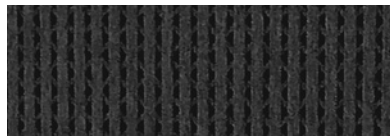


Scarlet Red

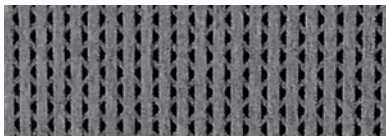


Stormy Sea

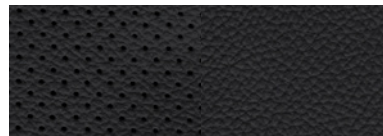
## Interior colours\*



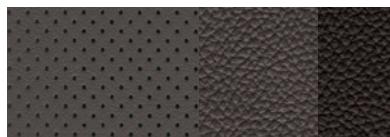
Black Cloth  
Standard on Essential and Preferred models



Grey Cloth  
Available on Preferred model  
(Twilight Black, Quartz White and Stormy Sea exterior colours only.)



Black Leather  
Standard on Luxury and Ultimate models



Grey Leather  
Available on Luxury and Ultimate models  
(Twilight Black and Stormy Sea exterior colours only.)



Beige Leather  
Available on Luxury and Ultimate models  
(Twilight Black, Quartz White, Scarlet Red and Rainforest exterior colours only with Luxury and Ultimate models.)  
(Earthy Bronze and Lava Orange exterior colours only with Ultimate model.)

## Wheels



17" Alloy wheel  
Standard on Essential model



18" Alloy wheel  
Standard on Preferred and Luxury models



19" Alloy wheel  
Standard on Ultimate model

\*Exterior and interior colour options and/or availability by model may change without notice. Choice of interior colour is dependent on model and/or exterior colour selection. Colours shown are for reference only and may vary from the actual hue. Visit [hyundaicanada.com](http://hyundaicanada.com) or see your dealer for details.



# Dimensions

Overall width  
(excluding side mirrors)



1,890 mm

Overall length



4,770 mm

Overall height  
(with roof rack side rails)



1,705 mm

# Accessories



## Trailer hitch kit

Designed to meet your towing needs, a Hyundai hitch can accommodate a wide variety of hitch-mounted accessories. Kit includes: trailer hitch, ball mount and end cap (chrome ball shown not included).



## Premium all-weather floor liners

Premium all-weather floor liners were designed to cover the interior carpet, providing maximum protection against the elements that other mats cannot offer. Their unique and durable design features a non-slip surface for added comfort and a long-lasting premium look. Remove carpet mats prior to installation.



## Side steps — oval tubes

These oval side steps were designed to complement the design nature of your Hyundai. They are as attractive as they are functional. Finished in stainless steel, these oval side steps include step pads for secure footing and will look good for years to come.



## Cross rails

This durable, quick-locking cross rail system lets you transport cargo easily, without sacrificing interior room.



# Model summary

## Essential

Standard equipment includes:

- 2.4L GDI 4-cylinder engine with idle start-stop
- 8-speed automatic transmission
- Electronic Parking Brake
- Front Wheel Drive
- Trailer pre-wiring
- 17" alloy wheels
- Automatic headlights
- Body colour exterior door handles
- Heated, power-adjustable side mirrors
- Front fog lights
- Front solar glass
- LED daytime running lights
- Projector headlights with LED accents
- Rear privacy glass
- Roof rack side rails
- 6 airbags
- Hill-start Assist Control
- Vehicle Stability Management, Electronic Stability Control, Traction Control System, Anti-lock Braking System
- 7.0" touch-screen display
- Apple CarPlay™<sup>A</sup> and Android Auto™<sup>®</sup>
- Bluetooth® hands-free phone system
- Driver's seat 2-way power lumbar support
- Heated front seats
- Heated, leather-wrapped steering wheel
- Manual child lock
- Power windows with driver and front passenger's auto-up/down
- Rearview camera with dynamic guidelines
- Tilt and telescopic steering column
- USB ports (4 total)

### Optional:

- HTRAC™ All-Wheel Drive

### Optional safety package:

- Adaptive Cruise Control with traffic stop and go
- Driver Attention Warning
- Forward Collision-Avoidance Assist with Pedestrian Detection
- High Beam Assist
- Lane Departure Warning with Lane Keeping Assist

## Preferred

Includes **Essential with Safety Package** standard equipment plus:

- HTRAC™ All-Wheel Drive
- 18" alloy wheels
- Sharkfin antenna
- Blind-Spot Collision-Avoidance Assist
- Rear Cross-Traffic Collision-Avoidance Assist
- Parking Distance Warning – Reverse
- Power child lock
- Rear Occupant Alert
- Safe Exit Assist
- 8-way power driver's seat
- Auto-defogging windshield system
- BlueLink®
- Bluetooth® hands-free phone system with voice recognition
- Dual-zone automatic climate control with CleanAir Ionizer and Predictive Logic
- Electrochromic auto-dimming rearview mirror with HomeLink®, Compass and BlueLink® controls
- Proximity keyless entry with push-button ignition and alarm
- SiriusXM™ and HD Radio
- Sliding second-row seats with cargo area releases

### Optional:

- 2.0T GDI 4-cylinder engine with 3,500 lbs towing capacity

### Optional:

- Panoramic sunroof with premium headliner and LED map lights

## Luxury

Includes **Preferred** standard equipment plus:

- 2.0T GDI 4-cylinder engine with 3,500 lbs towing capacity
- Chrome bumper moulding and side garnish
- Chrome exterior door handles
- Smart Power Liftgate
- 8-way power front passenger seat
- Deluxe door scuff
- Driver's Integrated Memory System (seat and side mirrors)
- Electro-luminescent gauge cluster with 7.0" supervision LCD trip computer
- Heated rear seats
- Leather console moulding
- Leather seating surfaces
- Manual rear sunshade blinds
- Panoramic sunroof with premium headliner and LED map lights
- Power driver's seat 4-way lumbar support
- Power extendable driver's seat cushion
- Surround View Monitor
- Ventilated front seats

## Ultimate

Includes **Luxury** standard equipment plus:

- 19" alloy wheels
- Continental tires
- LED fog lights
- LED headlights (low/high beam)
- LED tail lights
- Rain-sensing windshield wipers
- 8.0" touch-screen display with navigation system (includes Map Care: two updates per year for five years, free of charge — see dealer for details)
- Head-Up Display
- Infinity® premium audio system with 12 speakers (including QuantumLogic® Surround with Clari-Fi™ music restoration technology)
- Wireless charging pad\*



# Specifications

	Essential	Preferred	Luxury	Ultimate
<b>Performance</b>				
<b>Engine and transmission</b>				
2.4L GDI Theta II 4-cylinder engine (185 hp, 178 lb-ft torque)	●	●	-	-
2.0L Turbo-GDI Theta II 4-cylinder engine (235 hp, 260 lb-ft torque)	-	○	●	●
8-speed automatic transmission with SHIFTRONIC® manual mode	●	●	●	●
<b>Drive configuration</b>				
Front Wheel Drive (FWD)	●	-	-	-
HTRAC™ All-Wheel Drive (AWD)	○	●	●	●
<b>Exterior</b>				
<b>Wheels</b>				
Temporary spare tire	●	●	●	●
17 x 7.0J Alloy wheels	●	-	-	-
18 x 7.5J Alloy wheels	-	●	●	-
19 x 7.5J Alloy wheels	-	-	-	●
<b>Exterior lighting</b>				
Automatic headlights	●	●	●	●
Front fog lights	●	●	●	-
LED daytime running lights	●	●	●	●
Projector headlights with LED accents	●	●	●	●
LED fog lights	-	-	-	●
LED headlights (low/high beam) and LED tail lights	-	-	-	●
<b>Outside mirrors</b>				
Power-adjustable, body colour, heated with timer	●	●	●	●
Turn signal indicators	-	●	●	●
<b>Mouldings and trim</b>				
Door handles, body colour	●	●	-	-
Door handles, premium satin finish (or dark chrome with Lava Orange and Twilight Black)	-	-	●	●
<b>Glass</b>				
Acoustically laminated, front windshield glass	●	●	●	●
Solar control tinted glass and rear window privacy glass	●	●	●	●
Panoramic sunroof	-	○	●	●
<b>Wipers</b>				
Intermittent rear window wiper/washer (non-variable)	●	●	●	●
Rain-sensing windshield wipers	-	-	-	●
<b>Interior</b>				
<b>Seating</b>				
5 passenger capacity	●	●	●	●
60/40 split-fold flat rear seatbacks with recline	●	●	●	●
Heated front seats	●	●	●	●
Cloth seating surfaces	●	●	-	-
6-way manually adjustable driver's seat with 2-way power lumbar support	●	-	-	-
8-way power driver's seat with 2-way lumbar support	-	●	-	-
Rear sliding seats	-	●	●	●
8-way power front passenger seat	-	-	●	●
8-way power driver's seat with 4-way power lumbar support and leg cushion extension	-	-	●	●
Driver's Integrated Memory System for seat and side mirror positions	-	-	●	●
Heated rear seats and ventilated front seats	-	-	●	●
Leather seating surfaces	-	-	●	●
<b>Steering wheel and instrumentation</b>				
Heated, leather-wrapped steering wheel	●	●	●	●
Steering wheel-mounted audio, cruise and telephone controls	●	●	●	●
7.0" TFT digital gauge cluster	-	-	●	●

● Standard    - Not Available    ○ Optional

	Essential	Preferred	Luxury	Ultimate
<b>Multimedia</b>				
Android Auto™ <sup>o</sup> , Apple CarPlay™ <sup>Δ</sup>	●	●	●	●
Rearview camera	●	●	●	●
7.0" touch-screen display	●	●	●	-
AM/FM/MP3 audio system	●	-	-	-
Bluetooth® hands-free phone system	●	-	-	-
AM/FM/SiriusXM™/HD Radio/MP3 audio system	-	●	●	-
BlueLink® Connected Car System	-	●	●	●
Bluetooth® hands-free phone system with voice recognition	-	●	●	●
Surround View Monitor	-	-	●	●
8.0" colour touch-screen with navigation system	-	-	-	●
630-watt AM/FM/SiriusXM™/HD Radio/MP3 Infinity® premium audio system with 12 speakers	-	-	-	●
Head-Up Display (projection)	-	-	-	●
Wireless charging pad <sup>▼</sup>	-	-	-	●
<b>HVAC</b>				
Rear window defroster with timer	●	●	●	●
Second-row HVAC vents	●	●	●	●
Manual air conditioning with cabin air filter	●	-	-	-
Automatic window defogging system	-	●	●	●
Dual-zone automatic climate control with CleanAir Ionizer and Predictive Logic	-	●	●	●
<b>Convenience</b>				
USB ports (4 total)	●	●	●	●
Cargo area under floor storage	●	●	●	●
Power windows with driver and front passenger's auto-up/down and pinch protection	●	●	●	●
Remote keyless entry system with security alarm	●	●	●	●
Sunvisor with illuminated vanity mirrors and visor extension	●	●	●	●
Cruise control	●	-	-	-
Adaptive Cruise Control with traffic stop and go	○	●	●	●
Proximity keyless entry with push-button ignition	-	●	●	●
Trailer preparation package (3,500 lbs towing capacity)	-	○	●	●
Electrochromic auto-dimming rearview mirror with compass and HomeLink®	-	●	●	●
Manual rear sunshades	-	-	●	●
Smart Power Liftgate	-	-	●	●
<b>Safety</b>				
6 airbags	●	●	●	●
Anti-lock Braking System with Electronic Brake-force Distribution and Brake Assist	●	●	●	●
Vehicle Stability Management	●	●	●	●
Driver Attention Warning	○	●	●	●
Forward Collision-Avoidance Assist with Pedestrian Detection	○	●	●	●
Lane Departure Warning with Lane Keeping Assist	○	●	●	●
High Beam Assist	○	●	●	●
Blind-Spot Collision-Avoidance Assist	-	●	●	●
Parking Distance Warning — Rear	-	●	●	●
Rear Cross-Traffic Collision-Avoidance Assist	-	●	●	●
Rear Occupant Alert	-	●	●	●
Safe Exit Assist	-	●	●	●
<b>Fuel economy (Litres/100km)^</b>				
2.4L FWD – City / Highway / Combined	10.7 / 8.2 / 9.6			
2.4L AWD – City / Highway / Combined	11.2 / 8.7 / 10.1			
2.0L AWD – City / Highway / Combined	12.3 / 9.8 / 11.2			



**5** YEAR/100,000 KM  
Comprehensive Limited Warranty†  
YEAR/100,000 KM  
Powertrain Warranty  
YEAR/100,000 KM  
Emission Warranty  
YEAR/UNLIMITED KM  
Roadside Assistance Program††

## One of the best-backed warranties in Canada.

You will see that a number of our vehicles have received multiple awards from the most reputable third-party organizations, so you can take their word when it comes to the quality of our vehicles. This quality is equally matched by the quality of our warranty. We stand confidently behind our products to give you ultimate peace of mind with a 5-year/100,000 kilometre Comprehensive Limited Warranty†. We also provide a 5-year/Unlimited kilometre Roadside Assistance Program†† featuring flat tire changing, lockout service and more. Just one toll-free call away, 24 hours a day.



**Hyundai Auto Canada Corp.**  
www.hyundaicanada.com



™/®The Hyundai name, logos, product names, feature names, images and slogans are trademarks owned or licensed by Hyundai Auto Canada Corp.. Specifications, features, illustrations, accessories, materials and equipment and all other information shown in this brochure are based on the latest information available at the time of publication. Although descriptions are believed to be correct, accuracy cannot be guaranteed. Hyundai Auto Canada Corp. reserves the right to make any changes or modifications at any time, without notice or obligation, including, without limitation, in colour, specifications, features, accessories, materials, equipment and models. Some vehicles are shown with optional equipment. All Hyundai warranties have no deductible. †Hyundai's Comprehensive Limited Warranty coverage covers most vehicle components against defects in workmanship under normal use and maintenance conditions. ††Hyundai's 24-Hour Roadside Assistance Program is a limited service and does not cover certain costs or expenses. Roadside Assistance is not a warranty. ‡Fuel economy figures are based on manufacturer's testing and are used for comparison purposes only. Actual fuel efficiency may vary based on driving conditions and the addition of certain vehicle accessories. ‡Apple CarPlay™ works with iPhone 5s, iPhone 5c, iPhone 5 and later models running the latest version of iOS 7 and above. CarPlay™ may not be available on all devices and may not be available in all countries or regions. Visit [www.apple.com](http://www.apple.com) for further details and any applicable limitations. Subject to app compatibility. Apple and Apple CarPlay are trademarks of Apple Inc.. ‡Android Auto™ is compatible with Android phones running Android Lollipop or newer. Android Auto may not be available on all devices and is not available in all countries or regions. Additional apps may be required. Visit [www.android.com](http://www.android.com) for further details and any applicable limitations. Subject to app compatibility. Android and Android Auto are trademarks of Google Inc.. ‡Available on select models only. BlueLink® includes 5 years of service without charge. The BlueLink® service is available for new vehicle purchases and leases subject to the BlueLink® subscription terms and conditions. Only use BlueLink® and corresponding devices when safe to do so. Cellular and GPS coverage is required. Features, specifications, and fees may vary by models and are subject to change. For more on details and limitations, visit [hyundaicanada.com](http://hyundaicanada.com) or your authorized Hyundai dealer. ‡Not all devices will be compatible. See Owner's Manual for further details. ‡Forward Collision-Avoidance Assist (FCA) is designed to detect vehicles that are directly in front of the vehicle. FCA will not detect all vehicles and objects. FCA may not work on winding or hilly roads, during certain weather conditions such as rain, snow, fog and any other times of limited visibility. FCA engages at 10km/h. The specific features of FCA are only activated within certain respective speed ranges. FCA will not detect all pedestrians under certain conditions. See Owner's Manual for detailed descriptions of example conditions in which FCA may not detect a pedestrian. FCA is not a substitute for safe driving. Always check your surroundings when driving. See Owner's Manual for further details and limitations. ‡The Lane Departure Warning System with Lane Keeping Assist operates when vehicle speed exceeds 64 km/h and only when the lane markings are clearly visible on the road and detected by the system. It will not prevent loss of control. See Owner's Manual for further details and limitations. ‡Never rely exclusively on the Rear Cross-Traffic Collision-Avoidance Assist, it is not a substitute for attentive driving or driver using the brakes to avoid a collision. Always look over your shoulder and use your mirrors to confirm rear clearance. There are limitations to the function, detection, range and clarity of the system. The system may not detect every vehicle and may not avoid every collision. This system does not detect stationary objects. Vehicle must be in reverse and has to be travelling at 10 km/h or less. See Owner's Manual for further details and limitations. ‡Never rely completely on Blind-Spot Collision-Avoidance Assist (BCA) and be sure to use proper lane changing procedures. BCA is activated when the vehicle is travelling at least 60 km/h and when the turn signals are activated. BCA will not detect every object or vehicle and will not prevent accidents. The braking function may not always avoid a collision. There are limitations to the function, range, detection and clarity of the system. BCA is dependent on the side, distance, angle and relative speed difference between the vehicle and other vehicles and will not operate if sensors are obscured. Always look over your shoulder and use your mirrors to confirm clearance. See Owner's Manual for further details and limitations. ‡Driver Attention Warning (DAW) is only a notification system and will not influence the direction or speed of the vehicle. DAW will not prevent accidents. DAW does not replace attentive and safe driving. Always ensure that you pay careful attention while driving. See Owner's Manual for further details and limitations. ‡When the vehicle is parked, Safe Exit Assist (SEA) can alert occupants planning to exit the vehicle when a vehicle is approaching from behind. When Child Locks are active, SEA prevents the rear doors from opening if a vehicle approaching from behind is detected. SEA may not detect every vehicle and may not avoid an accident. SEA is not a substitute for attentive operation of the vehicle. Always monitor the vehicle's surroundings before any passengers exit the vehicle. See Owner's Manual for important details and limitations. ‡Do not solely rely on Rear Occupant Alert (ROA) to determine whether rear seats are empty. Always make sure you check rear seats before exiting the vehicle. ROA may not detect a rear occupant in certain situations, including where no or little movement is detected or if the sensor is obscured. Please refer to the Owner's Manual for further limitations and information regarding ROA. ‡Adaptive Cruise Control (ACC) with traffic stop and go is not a collision avoidance or warning device. ACC is for highway use only and should not be used in poor weather, heavy or varying traffic, or on winding or slippery roads. Driver remains responsible to slow or stop the vehicle to avoid a collision. Acceleration after the vehicle comes to a complete stop will only occur when the vehicle has been stopped for less than three seconds. See Owner's Manual for further details and limitations. The SiriusXM™ name is a trademark of SiriusXM Satellite Radio Inc.. Bluetooth® word mark and logos are registered trademarks owned by Bluetooth SIG, Inc.. HomeLink® is a registered trademark of Johnson Controls Inc.. Infinity® is a registered trademark of Harman International, Inc.. All other trademarks and trade names are those of their respective owners.

0195A-L600