

# TUCSON

2021





# A bit about us.

With Hyundai, you can really have it all.

Our company believes in pushing the boundaries and challenging conventional thinking. Our very name, “Hyundai”, stands for modernity in the Korean language and it is this one word that helps represent everything we stand for. We don’t approach vehicle development in a traditional way. Our company is structured differently. We think differently. We find the modern way. It’s our mission to offer top quality, feature-rich vehicles at an affordable price.

We offer elite quality through meticulous design and painstaking craftsmanship. Our three design centres in Korea, the U.S. and Europe compete against each other to bring you cutting-edge designs — designs that not only look stunning but are also aerodynamic and fuel efficient.

We are the only global automaker to manufacture our own Advanced High-Strength Steel because, simply put, we just weren’t satisfied with what was available.

We test our vehicles in areas like the Arctic, our proving grounds in the Mojave Desert and on Germany’s world-famous Nürburgring circuit to deliver the durability and reliability you demand. And not only do we package our vehicles with advanced safety and technology, we back all our vehicles with one of the best automotive warranties in the industry. This means you really can have it all, quality and value together.







# Full of life.

The Hyundai Tucson is always ready for adventure. With innovative features to keep you connected like standard Apple CarPlay<sup>TM</sup> and Android Auto<sup>TM</sup> smartphone connectivity, capable performance offered with available HTRAC<sup>TM</sup> All-Wheel Drive and the choice between two engines, adventure is waiting. Let's go!



## **Blue skies and starry nights**

The available panoramic sunroof allows you to enjoy fresh air, clear views and starry nights. Its expansive size means it spans above both front and rear passengers.



## **HTRAC<sup>TM</sup> All-Wheel Drive**

Our available HTRAC<sup>TM</sup> All-Wheel Drive system adds even further confidence to every adventure. The innovative system is constantly monitoring multiple input signals processed over 100 times per second and will automatically redistribute wheel traction based on road conditions to help ensure control.

# Find adventure in style.

The Tucson makes an impressive entrance with its athletic side character line and aggressive, wide stance. Up front, the dominant hexagonal front grille is complemented by stylish and efficient lighting technology — like the available LED headlights with High Beam Assist. The Urban Edition turns heads with features like the glossy black mesh grille and RAYS® 19" alloy wheels.



Urban Edition model



Available 19" alloy wheels



Available LED headlights  
Available LED tail lights





# Explore in comfort.

Capability means nothing without comfort, which is why the Tucson comes handsomely equipped with a wealth of features designed around you.



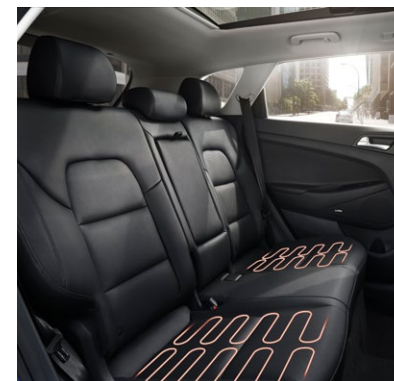
U.S. model, may not be exactly as shown.



Available heated steering wheel  
Available 8-way power driver's seat  
with 2-way lumbar support



Standard heated front seats  
Available ventilated front seats  
Available heated rear seats



# Convenient technologies.

No need to search for your keys, or kick and shuffle your feet to open the rear liftgate. The available proximity key technology allows you to automatically open the available Smart Power Liftgate and unload your two hands' worth of cargo effortlessly. Load up for your next adventure with 1,754 litres of cargo space when the rear seats are folded down, or split and fold them 60/40 to accommodate longer items and your passengers. Once inside, another feature you will love for its convenience is the available Surround View Monitor that projects a 360° view around your Tucson for easy navigation in tight parking spots.



Available Smart Power Liftgate



Standard 7.0" touch-screen with Apple CarPlay™<sup>Δ</sup> and Android Auto™<sup>◇</sup>  
Available proximity keyless entry with push-button ignition



Available 8.0" touch-screen with navigation system and Surround View Monitor  
Available dual-zone automatic temperature control



# Hyundai SmartSense™

Find added peace of mind on every journey with Hyundai SmartSense™, an array of state-of-the-art safety technology offered with the 2021 Tucson. This includes standard Forward Collision-Avoidance Assist<sup>1</sup> to apply emergency braking if a potential frontal collision with a vehicle is detected, and standard Lane Departure Warning with Lane Keeping Assist<sup>2</sup>, to help keep you safely in your lane.

## Standard features:



Forward  
Collision-Avoidance  
Assist



Lane Departure Warning  
with Lane Keeping Assist

## Available features:



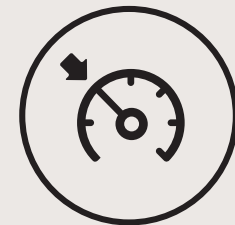
Forward Collision-  
Avoidance Assist with  
Pedestrian Detection



Blind-Spot Collision  
Warning with Lane  
Change Assist



Rear Cross-Traffic  
Collision Warning



Adaptive Cruise  
Control with traffic  
stop and go



High Beam  
Assist



Driver Attention  
Warning



Parking Distance  
Warning - Reverse



# Ultimate convenience. Ultimate connectivity.

Bluelink<sup>®</sup> is our connected vehicle system that is available throughout our vehicle lineup. The advanced system conveniently keeps you connected with your Hyundai via the smartphone app, and offers a suite of services at the press of a button. Visit [hyundaicanada.com/bluelink](http://hyundaicanada.com/bluelink) or see your dealer for more information on the complete list of innovative features that Bluelink<sup>®</sup> puts at your fingertips.



Remote start with climate control



SOS emergency and roadside assistance



Automatic collision notification



Remote lock/unlock



Find my car



Local search



Real-time diagnostics



Find a dealer



Complimentary 3-year subscription on equipped models





# Find the TUCSON that is right for you.

## Essential FWD

Standard equipment includes:

### Performance features:

- 2.0L GDI 4-cylinder engine (160 hp, 150 lb-ft torque)
- 6-speed automatic transmission with SHIFTRONIC®
- Front Wheel Drive (FWD)
- 17" steel wheels with 225/60R17 tires
- Temporary compact spare tire

### Exterior features:

- Projector headlights with LED accent lights
- LED daytime running lights
- Automatic on/off headlights
- Front fog lights
- Body-coloured rear spoiler with LED brake light
- Power, heated, body-coloured side mirrors
- Driver's blind spot mirror
- Sharkfin antenna

### Interior features:

- 7.0" colour touch-screen display with AM/FM/MP3 audio system; 6 speakers
- Apple CarPlay™<sup>Δ</sup> and Android Auto™<sup>Ω</sup>
- USB/auxiliary connectivity
- Bluetooth® hands-free phone system
- Steering wheel-mounted audio with cruise and phone controls
- 3.5" LCD multi-information cluster display
- Air conditioning with cabin air filter
- Heated front seats
- 6-way manually adjustable driver's seat
- 60/40-split second row with recline and centre armrest
- Remote keyless entry system with alarm
- Power windows with driver's auto-down
- Tilt-and-telescopic steering wheel
- 12-volt power outlets (front console and luggage area)
- Windshield washer fluid level sensor

### Safety features:

- Forward Collision-Avoidance Assist (camera type)
- Lane Departure Warning with Lane Keeping Assist
- Rearview camera
- Vehicle Stability Management with Electronic Stability Control, Traction Control System and Hill-start Assist Control
- 4-wheel disc brakes; Anti-lock Braking System with Electronic Brake-force Distribution and Brake Assist
- 6 airbags

### Optional:

- HTRAC™ All-Wheel Drive (AWD)

## Preferred FWD

Includes **Essential FWD** standard equipment plus:

### Performance features:

- 17" alloy wheels
- Drive Mode Select

### Exterior features:

- Roof side rails
- Front door handle pocket lighting
- LED side mirror repeaters
- Solar glass and rear privacy glass

### Interior features:

- Proximity keyless entry with push-button ignition
- Leather-wrapped steering wheel and shift knob
- Heated steering wheel
- Heated rear seats
- Second-row air vents
- Power windows with driver's auto-up/down
- Illuminated vanity mirrors and glovebox

### Safety features:

- Blind-Spot Collision Warning with Lane Change Assist
- Rear Cross-Traffic Collision Warning

### Optional:

- HTRAC™ All-Wheel Drive

### Optional: Sun & Leather package

Includes **Preferred AWD** equipment plus:

- Leather seating surfaces
- Panoramic sunroof with LED map lights

### Optional: Trend package

Includes **Preferred AWD** equipment plus:

- 2.4L GDI 4-cylinder engine (181 hp, 175 lb-ft torque)
- Panoramic sunroof with LED map lights
- 18" alloy wheels
- Front and rear premium silver-painted fascia
- Chrome-tipped dual exhaust
- Bluelink®<sup>Ω</sup> connected vehicle system
- Dual-zone automatic temperature control with CleanAir ionizer and auto-defogging windshield system
- Electrochromic rearview mirror with HomeLink®
- 8-way power driver's seat with 2-way lumbar support
- Bluetooth® hands-free phone system with voice recognition
- SiriusXM™<sup>‡</sup>

## Urban Edition AWD

Includes **Preferred AWD with Trend package** equipment plus\*:

### Exterior features

#### (Urban Edition-exclusive):

- 19" RAYS® alloy wheels
- Glossy black front grille with dark chrome garnish
- Glossy black side mirrors
- Body-coloured side sills
- Body-coloured front and rear skid plates

### Interior features:

- Leather seating surfaces

### Safety features:

- Adaptive Cruise Control with traffic stop and go
- Electronic Parking Brake
- Forward Collision-Avoidance Assist with Pedestrian Detection (camera and radar type)

### \*Does not include the following features:

- Sirius XM™<sup>‡</sup>
- Bluetooth® hands-free phone system with voice recognition
- Dual-zone automatic temperature control with CleanAir ionizer and auto-defogging windshield system
- Electrochromic rearview mirror with HomeLink®
- Bluelink®<sup>Ω</sup> connected vehicle system

## Luxury AWD

Includes **Preferred AWD with Trend package** equipment plus:

### Exterior features:

- Smart Power Liftgate
- Chrome front radiator grille

### Interior features:

- Leather seating surfaces
- Leather-wrapped instrument panel
- Second-row USB power outlet
- Premium door sill plates
- Soft touch door panels
- Chrome garnish on power window switches

### Safety features:

- Surround View Monitor
- Electronic Parking Brake

## Ultimate AWD

Includes **Luxury AWD** standard equipment plus:

### Performance features:

- 19" alloy wheels

### Exterior features:

- LED headlights (low/high beam)
- LED tail lights
- Rain-sensing windshield wipers
- Chrome exterior door handles

### Interior features:

- 8.0" touch-screen with navigation system
- Infinity® audio system with Clari-Fi™ music restoration technology, external amplifier and 8 speakers
- Ventilated front seats
- Power front passenger's seat
- Leather-wrapped driver's inboard knee bolster panel
- 4.2" LCD supervision cluster

### Safety features:

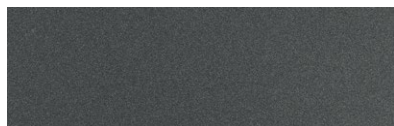
- Adaptive Cruise Control with traffic stop and go
- Forward Collision-Avoidance Assist with Pedestrian Detection (camera and radar type)
- High Beam Assist
- Driver Attention Warning
- Parking Distance Warning – Reverse

# Colours and wheels.

## Exterior colours\*

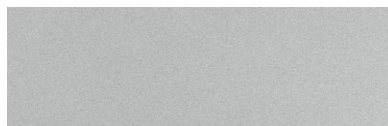


Ash Black



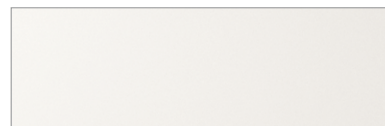
Magnetic Grey

Not available on Urban Edition model



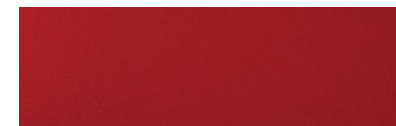
Typhoon Silver

Not available on Urban Edition model



Crystal White

Not available on Urban Edition model



Crimson Red

Not available on Essential or Urban Edition models



Dusk Blue

Not available on Essential or Urban Edition models



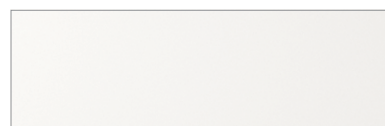
Aqua Blue

Not available on Essential model



Coliseum Grey

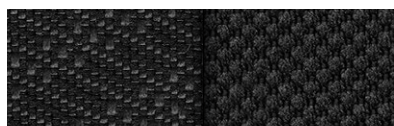
Available on Urban Edition model only



Winter White

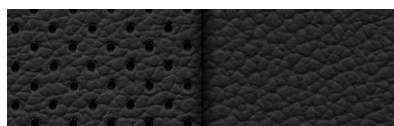
Available on Urban Edition model only

## Interior colours\*



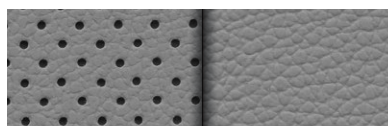
Black Cloth

Standard on Essential and Preferred models



Black Leather

Standard on Preferred with Sun & Leather package, Urban Edition, Luxury and Ultimate models



Grey Leather

Available on Ultimate model (Magnetic Grey exterior colour only)



Beige Leather

Available on Ultimate model (Crimson Red, Crystal White and Ash Black exterior colours only)

## Wheels



17" steel wheel

Standard on Essential model



17" alloy wheel

Standard on Preferred model



18" alloy wheel

Standard on Preferred model with Trend package and Luxury model



19" alloy wheel

Standard on Ultimate model



19" RAYS® alloy wheel

Standard on Urban Edition model

\*Exterior and interior colour options and/or availability may change without notice. Choice of interior colour is dependent on model and/or exterior colour selection. Colours shown are for reference only and may vary from the actual hue. Visit [hyundaicanada.com](http://hyundaicanada.com) or see your dealer for details.



# Accessories.



## Running boards

Getting in and out of your vehicle is easier with a set of durable running boards.



## Cross rails

This durable, quick-locking cross rail system lets you transport cargo easily, without sacrificing interior room.



## Trailer hitch kit

Designed to meet your towing needs, a Hyundai hitch can accommodate a wide variety of hitch-mounted accessories. Kit includes the trailer hitch, ball mount and end cap.



## Premium all-weather floor liners

Premium all-weather floor liners were designed to cover the interior carpet, providing maximum protection against the elements that other mats cannot offer. Their unique and durable design features a non-slip surface for added comfort and a long-lasting premium look. Remove carpet mats prior to installation.

<b>5</b> YEAR	<b>100,000 km</b> Comprehensive Limited Warranty <sup>†</sup>
<b>5</b> YEAR	<b>100,000 km</b> Powertrain Warranty
<b>5</b> YEAR	<b>100,000 km</b> Emission Warranty
<b>5</b> YEAR	<b>Unlimited km</b> Roadside Assistance Program <sup>††</sup>

## One of the best-backed warranties in Canada.

You will see that a number of our vehicles have received multiple awards from the most reputable third-party organizations, so you can take their word when it comes to the quality of our vehicles. This quality is equally matched by the quality of our warranty. We stand confidently behind our products to give you ultimate peace of mind with a 5-year/100,000 kilometre Comprehensive Limited Warranty<sup>†</sup>. We also provide a 5-year/Unlimited kilometre Roadside Assistance Program<sup>††</sup> featuring flat tire changing, lockout service and more. Just one toll-free call away, 24 hours a day.

<sup>™</sup>/<sup>®</sup>The Hyundai name, logos, product names, feature names, images and slogans are trademarks owned or licensed by Hyundai Auto Canada Corp.. Specifications, features, illustrations, accessories, materials and equipment and all other information shown in this brochure are based on the latest information available at the time of publication. Although descriptions are believed to be correct, accuracy cannot be guaranteed. Hyundai Auto Canada Corp. reserves the right to make any changes or modifications at any time, without notice or obligation, including, without limitation, in colour, specifications, features, accessories, materials, equipment and models. Some vehicles are shown with optional equipment. All Hyundai warranties have no deductible. <sup>†</sup>Hyundai's Comprehensive Limited Warranty coverage covers most vehicle components against defects in workmanship under normal use and maintenance conditions. <sup>††</sup>Hyundai's 24-Hour Roadside Assistance Program is a limited service and does not cover certain costs or expenses. Roadside Assistance is not a warranty. <sup>‡</sup>Apple CarPlay<sup>™</sup> works with iPhone 5s, iPhone 5c, iPhone 5 and later models running the latest version of iOS 7 and above. Apple CarPlay<sup>™</sup> may not be available on all devices and may not be available in all countries or regions. Visit [www.apple.com](http://www.apple.com) for further details and any applicable limitations. Subject to app compatibility. Apple and Apple CarPlay are trademarks of Apple Inc.. <sup>§</sup>Android Auto<sup>™</sup> is compatible with Android phones running Android Lollipop or newer. Android Auto may not be available on all devices and may not be available in all countries or regions. Additional apps may be required. Visit [www.android.com](http://www.android.com) for further details and any applicable limitations. Subject to app compatibility. Android and Android Auto are trademarks of Google Inc.. <sup>¶</sup>Vehicle is equipped with the ability to access SiriusXM<sup>™</sup> radio. Does not include subscription. The SiriusXM<sup>™</sup> name is a trademark of SiriusXM Satellite Radio Inc.. <sup>||</sup>Available on select models only. Bluelink<sup>®</sup> includes 3 years of service without charge. The Bluelink service is available for new vehicle purchases and leases subject to the Bluelink subscription terms and conditions. Only use Bluelink and corresponding devices when safe to do so. Cellular and GPS coverage is required. Features, specifications, and fees may vary by model and are subject to change. For more on details and limitations, visit [hyundaicanada.com](http://hyundaicanada.com) or your authorized Hyundai dealer. <sup>¶¶</sup>Forward Collision-Avoidance Assist (FCA) is designed to detect vehicles that are directly in front of the vehicle. FCA will not detect all vehicles and objects. FCA will not work on winding or hilly roads, during certain weather conditions such as rain, snow, fog and any other times of limited visibility. The speed at which FCA initiates full braking depends on the type of FCA system equipped on the Tucson. FCA initiates full braking at speeds between 8 and 65 km/h (vehicle detection) if the Tucson is equipped with the FCA "camera type" system. FCA initiates full braking at speeds between 8 and 80 km/h (vehicle detection) or 8 and 70 km/h (pedestrian detection) if the Tucson is equipped with the FCA "camera and radar type" system. When equipped with pedestrian detection, FCA will not detect all pedestrians under certain conditions. See Owner's Manual for detailed descriptions of example conditions in which FCA may not detect a pedestrian. FCA is not a substitute for safe driving. Always check your surroundings when driving. See Owner's Manual for further details and limitations. <sup>¶¶¶</sup>Lane Departure Warning with Lane Keeping Assist operates when vehicle speed exceeds approximately 60 km/h and only when the lane markings are clearly visible on the road and detected by the system. It will not prevent loss of control. See Owner's Manual for further details and limitations. Bluetooth<sup>®</sup> word mark and logos are registered trademarks owned by Bluetooth SIG, Inc.. Infinity<sup>®</sup> is a registered trademark of Harman International, Inc.. HomeLink<sup>®</sup> is a registered trademark of Johnson Controls Inc.. All other trademarks and trade names are those of their respective owners. Some images shown with special graphic effects.

Hyundai Auto Canada Corp.  
[hyundaicanada.com](http://hyundaicanada.com)

