

2024 SONATA



Preferred-Trend

- FWD
- AWD

[Build & Price](#)

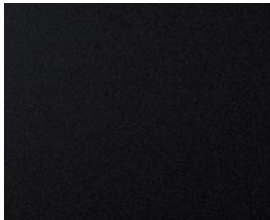


N Line Ultimate

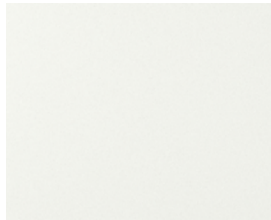
- FWD

[Build & Price](#)

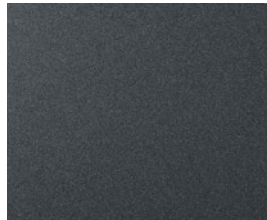
Exterior colours*



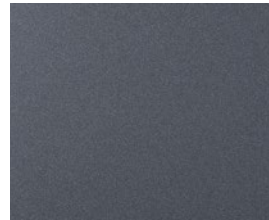
Abyss Black



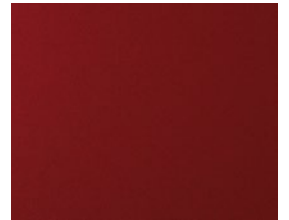
Serenity White



Nocturne Grey

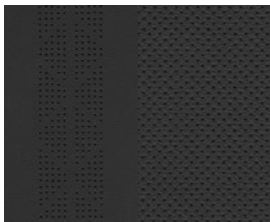


Transmission Blue

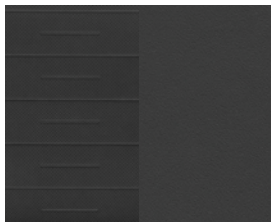


Ultimate Red
Available on N Line model only

Interior colours*



Black leather



Black Nappa and Suede
Available on N Line model only

Wheels



18" aluminum
alloy wheels



19" N Line aluminum
alloy wheels
Available on N Line model only

Features.

	Preferred-Trend	NLine Ultimate
Performance		
Smartstream 2.5L GDI + MPI DOHC 16-valve Inline 4-cylinder engine	•	-
Smartstream 2.5L Turbo-GDI + MPI DOHC 16-valve Inline 4-cylinder engine	-	•
190 Horsepower	•	-
290 Horsepower	-	•
Shift-by-Wire (SBW) gear selector	•	•
8-speed automatic transmission	•	-
N 8-speed Wet Dual-Clutch Transmission with REV match	-	•
HTRAC™ All-Wheel Drive (AWD)	◦	-
Sport-tuned exhaust with Active Sound Design (ASD)	-	•
Launch Control	-	•
Sport suspension calibration	-	•
Drive Mode Select (DMS)	•	•
Exterior	Preferred-Trend	NLine Ultimate
Panoramic sunroof	•	•
Body-coloured heated power-adjustable side mirrors	•	•
18" aluminum alloy wheels	•	-
19" aluminum alloy wheels (N Line-Exclusive)	-	•
Roof-mounted LED Brake light	•	•
LED integrated fender turn signal repeaters	•	•
LED Taillights	•	•
LED Daytime Running Lights	•	•
LED Automatic headlights	•	•
Premium LED Automatic headlights (projector-type)	-	-
Side sill mouldings and skid plate, gloss black	•	•
Body-colour door handles	•	•
Body-colour mirror caps	•	-
Gloss black mirror caps	-	•
Chrome window surround mouldings	•	-
Windshield and door frame mouldings, gloss black	-	•
N Line-exclusive front grille, gloss black mesh type with emblem	-	•
N Line-exclusive front bumper fascia	-	•
N Line-exclusive rear bumper	-	•
N Line-exclusive rear spoiler	-	•
Single exhaust outlet (hidden)	-	-
Dual twin-tip exhaust outlet (quad)	-	-
Speed-sensitive front windshield wipers with variable intermittent settings	•	•
Rain-sensing windshield wipers	•	•
Interior	Preferred-Trend	NLine Ultimate
Driver's Integrated Memory System (IMS) for seat and mirror positions	•	•
60/40 split-folding rear bench seat	•	•
Dual-zone automatic climate control with Driver-Only mode	•	•
Cargo area light	•	•
Heated front seats	•	•
Ventilated front seats	•	-
Leather-wrapped heated steering wheel with paddle shifters	•	•
Black cloth headliner	•	-
Dark grey cloth headliner	-	•
Aluminum pedals	-	•
Red interior accents and stitching	-	•
Leather seating surfaces	-	-
Nappa leather / suede (Dinamica®) bucket seats with red accents	-	•
8-way power-adjustable (driver's seat)	•	-
8-way power with 2-way lumbar support (driver's seat)	-	•
Power-adjustable (passenger's seat)	-	-
6-way manual with height adjuster (passenger's seat)	-	-
Height-adjustable front head restraints	•	•
Ambient lighting (64 colours)	-	•
Auto-dimming rearview mirror with HomeLink®	-	•
Technology	Preferred-Trend	NLine Ultimate
Proximity Key with Push-button Start	•	•
Proximity hands-free trunk opening	•	•
Over-the-Air software updates	•	•
Bluetooth® hands-free phone system	•	•
Bluelink® Connected Vehicle System	•	•
AM/FM/HD Radio/MP3/XM audio system with 6 speakers	-	-
AM/FM/HD Radio/MP3/XM and Bose® Premium Audio with 8 speakers	-	•
12.3" touchscreen display audio	•	-
12.3" touchscreen display audio with Navigation	-	•
4.2" Instrument gauge cluster display	•	-
12.3" Digital Instrument gauge cluster	-	•
2x Type-C Front USB ports (1x power/data & 1x high power)	•	•
2x Type-C Rear USB ports	•	•
Wireless Android Auto™ and Apple CarPlay™	•	•
Wireless Device Charging Pad	-	•
Digital Key	-	•
Safety	Preferred-Trend	NLine Ultimate
Smart Cruise Control (SCC) with Stop & Go	•	•
Intelligent Speed Limit Assist (ISLA)	•	•
Electronic Stability Control (ESC) with Traction Control System (TCS)	•	•
Anti-lock Braking System (ABS) with Electronic Brake-force Distribution (EBD) and Brake Assist (BA)	•	•
Blind-Spot Collision-Avoidance Assist (BCA)	•	•
Rear Cross-Traffic Collision-Avoidance Assist (RCCA)	•	•
Safe Exit Warning (SEW)	•	•
Safe Exit Assist (SEA)	•	•
Lane Keeping Assist (LKA)	•	•
Lane Following Assist (LFA)	•	•
Driver Attention Warning (DAW)	•	•
High Beam Assist (HBA)	•	•
Forward Collision-Avoidance Assist (FCA) with Pedestrian, Cyclist, and Junction-Turning Detection	•	•
Rear Occupant Alert (ROA)	•	•
Highway Driving Assist (HDA)	-	•

5 YEAR	100,000 km Comprehensive Limited Warranty [†]	5 YEAR	100,000 km Emission Warranty
5 YEAR	100,000 km Powertrain Warranty	5 YEAR	Unlimited km Roadside Assistance Program ^{††}

One of the best-backed warranties in Canada.

You will see that a number of our vehicles have received multiple awards from the most reputable third-party organizations, so you can take their word when it comes to the quality of our vehicles. This quality is equally matched by the quality of our warranty. We stand confidently behind our products to give you ultimate peace of mind with a 5-year/100,000 kilometre Comprehensive Limited Warranty[†]. We also provide a 5-year/Unlimited kilometre Roadside Assistance Program^{††} featuring flat tire changing, lockout service and more.

Just one toll-free call away, 24 hours a day.

Hyundai Auto Canada Corp.
hyundaicanada.com

